
probeinterface

Samuel Garcia

Nov 02, 2023

CONTENTS

1	Examples	3
1.1	Generate a Probe from scratch	3
1.2	2d and 3d Probes	5
1.3	Generate a ProbeGroup	9
1.4	Multi shank probes	11
1.5	Handle channel indices	14
1.6	Import/export functions	18
1.7	Probe generator	22
1.8	More plotting examples	26
1.9	More complicated probes	29
1.10	Get probe from library	33
1.11	Automatic wiring	35
1.12	Plot values	38
1.13	Overview	41
1.14	Examples	43
1.15	Format specifications	43
1.16	Probeinterface public library	50
1.17	API	50
1.18	Release notes	65
	Python Module Index	71
	Index	73

probeinterface is a Python package to handle probe layout, geometry and wiring to a device for neuroscience experiments.

The package handles the following items:

- probe geometry (2D or 3D layout)
- probe shape (contours of the probe)
- shape and size of the shank
- probe wiring to the recording device
- combination of several probes: global geometry + global wiring

The probeinterface package also provides:

- basic plotting functions with matplotlib
- input/output functions to several formats (PRB, NWB, CSV, MEArec, SpikeGLX, ...)

Here is a schema for the naming used in the package:



orphan

EXAMPLES

Start here with a tutorial showing probeinterface.

1.1 Generate a Probe from scratch

This example generates a probe from scratch.

```
import numpy as np
import matplotlib.pyplot as plt

from probeinterface import Probe
from probeinterface.plotting import plot_probe
```

First, let's create dummy positions for a 24-contact probe

```
n = 24
positions = np.zeros((n, 2))
for i in range(n):
    x = i // 8
    y = i % 8
    positions[i] = x, y
positions *= 20
positions[8:16, 1] -= 10
```

Now we can create a *Probe* object and set the position and shape of each contact

The *ndim* argument indicates that the contact is 2d, so the positions have a (n_elec, 2) shape. We can also define a 3d probe with *ndim*=3 and positions will have a (n_elec, 3) shape.

Note: *shapes* and *shape_params* could be arrays as well, indicating the shape for each contact separately.

```
probe = Probe(ndim=2, si_units='um')
probe.set_contacts(positions=positions, shapes='circle', shape_params={'radius': 5})
```

Probe objects have fancy prints!

```
print(probe)
```

```
Probe - 24ch - 1shanks
```

In addition to contacts, we can create the planar contour (polygon) of the probe

```

polygon = [(-20, -30), (20, -110), (60, -30), (60, 190), (-20, 190)]
probe.set_planar_contour(polygon)

```

If *pandas* is installed, the *Probe* object can be exported as a dataframe for a simpler view:

```

df = probe.to_dataframe()
df

```

If *matplotlib* is installed, the *Probe* can also be easily plotted:

```

plot_probe(probe)

```



```

(<matplotlib.collections.PolyCollection object at 0x3ff636c3110>, <matplotlib.
collections.PolyCollection object at 0x3ff62394770>)

```

A 2d *Probe* can be transformed into a 3d *Probe* by indicating the *axes* on which contacts will lie (Here the 'y' coordinate will be 0 for all contacts):

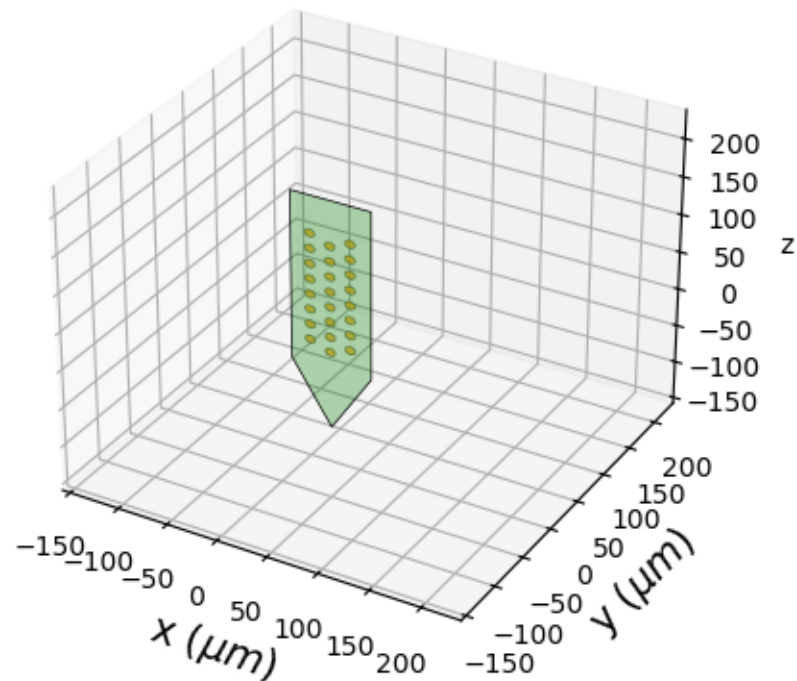
```

probe_3d = probe.to_3d(axes='xz')
plot_probe(probe_3d)

plt.show()

```


Probe - 24ch - 1shanks



Total running time of the script: (0 minutes 0.415 seconds)

1.2 2d and 3d Probes

This example shows how to manipulate a probe in 2d or 3d.

Import

```
import numpy as np
import matplotlib.pyplot as plt

from probeinterface import Probe
from probeinterface.plotting import plot_probe
```

First, let's create one 2d probe with 24 contacts:

```
n = 24
positions = np.zeros((n, 2))
for i in range(n):
    x = i // 8
    y = i % 8
    positions[i] = x, y
positions *= 20
```

(continues on next page)

(continued from previous page)

```
positions[8:16, 1] -= 10

probe_2d = Probe(ndim=2, si_units='um')
probe_2d.set_contacts(positions=positions, shapes='circle', shape_params={'radius': 5})
probe_2d.create_auto_shape(probe_type='tip')
```

Let's transform it into a 3d probe.

Here the axes are 'xz' so y will be 0 for all contacts. The shape of probe_3d.contact_positions is now (n_elec, 3)

```
probe_3d = probe_2d.to_3d(axes='xz')
print(probe_2d.contact_positions.shape)
print(probe_3d.contact_positions.shape)
```

```
(24, 2)
(24, 3)
```

Note that all “y” coordinates are 0

```
df = probe_3d.to_dataframe()
df[['x', 'y', 'z']].head()
```

The plotting function automatically displays the *Probe* in 3d:

```
plot_probe(probe_3d)
```

Probe - 24ch - 1shanks

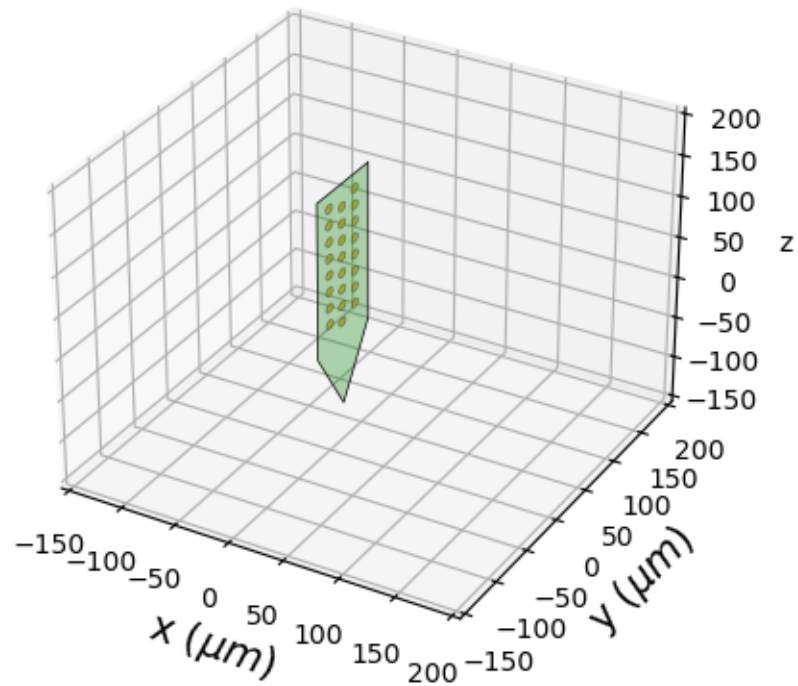


```
(<matplotlib.mplot3d.art3d.Poly3DCollection object at 0x3ff59f87050>, <matplotlib.mplot3d.art3d.Poly3DCollection object at 0x3ff59f9e450>)
```

We can create another probe lying on another plane:

```
other_3d = probe_2d.to_3d(axes='yz')
plot_probe(other_3d)
```

Probe - 24ch - 1shanks



```
(<matplotlib.pyplot.art3d.Poly3DCollection object at 0x3ff68d85b80>, <matplotlib.
Poly3DCollection object at 0x3ff68dc3350>)
```

Probe can be moved and rotated in 3d:

```
probe_3d.move([0, 30, -50])
probe_3d.rotate(theta=35, center=[0, 0, 0], axis=[0, 1, 1])

plot_probe(probe_3d)

plt.show()
```

Probe - 24ch - 1shanks



Total running time of the script: (0 minutes 0.280 seconds)

1.3 Generate a ProbeGroup

This example shows how to assemble several Probe objects into a ProbeGroup object.

Import

```
import numpy as np
import matplotlib.pyplot as plt

from probeinterface import Probe, ProbeGroup
from probeinterface.plotting import plot_probe_group
from probeinterface import generate_dummy_probe
```

Generate 2 dummy *Probe* objects with the utils function:

```
probe0 = generate_dummy_probe(elec_shapes='square')
probe1 = generate_dummy_probe(elec_shapes='circle')
probe1.move([250, -90])
```

Let's create a *ProbeGroup* and add the *Probe* objects into it:

```
probegroup = ProbeGroup()
probegroup.add_probe(probe0)
probegroup.add_probe(probe1)

print('probe0.get_contact_count()', probe0.get_contact_count())
print('probe1.get_contact_count()', probe1.get_contact_count())
print('probegroup.get_contact_count()', probegroup.get_contact_count())
```

```
probe0.get_contact_count() 32
probe1.get_contact_count() 32
probegroup.get_contact_count() 64
```

We can now plot all probes in the same axis:

```
plot_probe_group(probegroup, same_axes=True)
```



or in separate axes:

```
plot_probe_group(probegroup, same_axes=False, with_contact_id=True)

plt.show()
```



Total running time of the script: (0 minutes 0.185 seconds)

1.4 Multi shank probes

This example shows how to deal with multi-shank probes.

In *probeinterface* this can be done with a *Probe* object, but internally each probe handles a *shank_ids* vector to carry information about which contacts belong to which shanks.

Optionally, a *Probe* object can be rendered split into *Shank*.

Import

```
import numpy as np
import matplotlib.pyplot as plt

from probeinterface import Probe, ProbeGroup
from probeinterface import generate_linear_probe, generate_multi_shank
from probeinterface import combine_probes
from probeinterface.plotting import plot_probe
```

Let's use a generator to create a multi-shank probe:

```
multi_shank = generate_multi_shank(num_shank=3, num_columns=2, num_contact_per_column=6)
plot_probe(multi_shank)
```



```
(<matplotlib.collections.PolyCollection object at 0x3ff627d26f0>, <matplotlib.
collections.PolyCollection object at 0x3ff623bd0d0>)
```

multi_shank is one *probe* object, but internally the *Probe.shank_ids* vector handles the shank ids.

```
print(multi_shank.shank_ids)
```

```
['0' '0' '0' '0' '0' '0' '0' '0' '0' '0' '0' '0' '1' '1' '1' '1' '1' '1'
 '1' '1' '1' '1' '1' '1' '2' '2' '2' '2' '2' '2' '2' '2' '2' '2' '2' '2']
```

The dataframe displays the *shank_ids* column:

```
df = multi_shank.to_dataframe()
df
```

We can iterate over a multi-shank probe and get *Shank* objects. A *Shank* is linked to a *Probe* object and can also retrieve positions, contact shapes, etc.:

```
for i, shank in enumerate(multi_shank.get_shanks()):
    print('shank', i)
```

(continues on next page)

(continued from previous page)

```

print(shank.__class__)
print(shank.get_contact_count())
print(shank.contact_positions.shape)

```

```

shank 0
<class 'probeinterface.shank.Shank'>
12
(12, 2)
shank 1
<class 'probeinterface.shank.Shank'>
12
(12, 2)
shank 2
<class 'probeinterface.shank.Shank'>
12
(12, 2)

```

Another option to create multi-shank probes is to create several *Shank* objects as separate probes and then combine them into a single *Probe* object

```

# generate a 2 shanks linear
probe0 = generate_linear_probe(num_elec=16, ypitch=20,
                               contact_shapes='square',
                               contact_shape_params={'width': 12})

probe1 = probe0.copy()
probe1.move([100, 0])

multi_shank = combine_probes([probe0, probe1])

```

```

print(multi_shank.shank_ids)

```

```

['0' '0' '0' '0' '0' '0' '0' '0' '0' '0' '0' '0' '0' '0' '0' '1' '1'
 '1' '1' '1' '1' '1' '1' '1' '1' '1' '1' '1' '1' '1' '1']

```

```

plot_probe(multi_shank)

plt.show()

```



Total running time of the script: (0 minutes 0.148 seconds)

1.5 Handle channel indices

Probes can have a complex contacts indexing system due to the probe layout. When they are plugged into a recording device like an Open Ephys with an Intan headstage, the channel order can be mixed again. So the physical contact channel index is rarely the channel index on the device.

This is why the *Probe* object can handle separate *device_channel_indices*.

Import

```
import numpy as np
import matplotlib.pyplot as plt

from probeinterface import Probe, ProbeGroup
from probeinterface.plotting import plot_probe, plot_probe_group
from probeinterface import generate_multi_columns_probe
```

Let's first generate a probe. By default, the wiring is not complicated: each column increments the contact index from the bottom to the top of the probe:

```

probe = generate_multi_columns_probe(num_columns=3,
                                     num_contact_per_column=[5, 6, 5],
                                     xpitch=75, ypitch=75, y_shift_per_column=[0, -37.5, 37.5],
                                     contact_shapes='circle', contact_shape_params={
                                         'radius': 12})

plot_probe(probe, with_contact_id=True)

```



```

(<matplotlib.collections.PolyCollection object at 0x3ff82d37530>, <matplotlib.
collections.PolyCollection object at 0x3ff68f9bef0>)

```

The Probe is not connected to any device yet:

```
print(probe.device_channel_indices)
```

None

Let's imagine we have a headstage with the following wiring: the first half of the channels have natural indices, but the order of the other half is reversed:

```

channel_indices = np.arange(16)
channel_indices[8:16] = channel_indices[8:16][::-1]

```

(continues on next page)

(continued from previous page)

```
probe.set_device_channel_indices(channel_indices)
print(probe.device_channel_indices)
```

```
[ 0  1  2  3  4  5  6  7 15 14 13 12 11 10  9  8]
```

We can visualize the two sets of indices:

- the prbXX is the contact index ordered from 0 to N
- the devXX is the channel index on the device (with the second half reversed)

```
plot_probe(probe, with_contact_id=True, with_device_index=True)
```



```
(<matplotlib.collections.PolyCollection object at 0x3ff68602b70>, <matplotlib.
collections.PolyCollection object at 0x3ff68fdc380>)
```

Very often we have several probes on the device and this can lead to even more complex channel indices. *ProbeGroup.get_global_device_channel_indices()* gives an overview of the device wiring.

```
probe0 = generate_multi_columns_probe(num_columns=3,
                                      num_contact_per_column=[5, 6, 5],
                                      xpitch=75, ypitch=75, y_shift_per_column=[0, -37.5,
                                      ↪ 0],
```

(continues on next page)

(continued from previous page)

```

contact_shapes='circle', contact_shape_params={
↪ 'radius': 12})
probe1 = probe0.copy()

probe1.move([350, 200])
probegroup = ProbeGroup()
probegroup.add_probe(probe0)
probegroup.add_probe(probe1)

# wire probe0 0 to 31 and shuffle
channel_indices0 = np.arange(16)
np.random.shuffle(channel_indices0)
probe0.set_device_channel_indices(channel_indices0)

# wire probe0 32 to 63 and shuffle
channel_indices1 = np.arange(16, 32)
np.random.shuffle(channel_indices1)
probe1.set_device_channel_indices(channel_indices1)

print(probegroup.get_global_device_channel_indices())

```

```

[(0, 15) (0, 10) (0, 13) (0,  2) (0, 14) (0, 12) (0,  3) (0,  8) (0,  4)
 (0,  0) (0,  9) (0,  5) (0,  6) (0,  7) (0, 11) (0,  1) (1, 27) (1, 18)
 (1, 22) (1, 16) (1, 17) (1, 30) (1, 21) (1, 25) (1, 29) (1, 26) (1, 20)
 (1, 31) (1, 19) (1, 23) (1, 28) (1, 24)]

```

The indices of the probe group can also be plotted:

```

fig, ax = plt.subplots()
plot_probe_group(probegroup, with_contact_id=True, same_axes=True, ax=ax)

plt.show()

```



Total running time of the script: (0 minutes 0.236 seconds)

1.6 Import/export functions

probeinterface has its own format based on JSON. The format can handle several probes in one file. It has a ‘probes’ key that can contain a list of probes.

Each probe field in the json format contains the *Probe* class attributes.

It also supports reading (and sometimes writing) from these formats:

- PRB (.prb) : used by klusta/spyking-circus/tridesclous
- CSV (.csv): 2 or 3 columns locations in text file
- mearec (.h5) : mearec handles the geometry
- spikeglx (.meta) : spikeglx also handles the geometry

Import

```
import numpy as np
import matplotlib.pyplot as plt

from probeinterface import Probe, ProbeGroup
from probeinterface.plotting import plot_probe, plot_probe_group
```

(continues on next page)

(continued from previous page)

```

from probeinterface import generate_dummy_probe
from probeinterface import write_probeinterface, read_probeinterface
from probeinterface import write_prb, read_prb

```

Let's first generate 2 dummy probes and combine them into a ProbeGroup

```

probe0 = generate_dummy_probe(elec_shapes='square')
probe1 = generate_dummy_probe(elec_shapes='circle')
probe1.move([250, -90])

probegroup = ProbeGroup()
probegroup.add_probe(probe0)
probegroup.add_probe(probe1)

```

With the `write_probeinterface` and `read_probeinterface` functions we can write to and read from the json-based probeinterface format:

```

write_probeinterface('my_two_probe_setup.json', probegroup)

probegroup2 = read_probeinterface('my_two_probe_setup.json')
plot_probe_group(probegroup2)

```



The format looks like this:

(continued from previous page)

```

        'geometry': {
            4: [0, 50],
            5: [50, 0],
            6: [0, -50],
            7: [-50, 0],
        }
    }
}
"""

with open('two_tetrodes.prb', 'w') as f:
    f.write(prb_two_tetrodes)

two_tetrode = read_prb('two_tetrodes.prb')
plot_probe_group(two_tetrode, same_axes=False, with_contact_id=True)

plt.show()

```



Total running time of the script: (0 minutes 0.153 seconds)

1.7 Probe generator

probeinterface have also basic function to generate simple contact layouts like:

- tetrodes
- linear probes
- multi-column probes

Import

```
import numpy as np
import matplotlib.pyplot as plt

from probeinterface import Probe, ProbeGroup
from probeinterface.plotting import plot_probe, plot_probe_group
```

Generate 4 tetrodes:

```
from probeinterface import generate_tetrode

probegroup = ProbeGroup()
for i in range(4):
    tetrode = generate_tetrode()
    tetrode.move([i * 50, 0])
    probegroup.add_probe(tetrode)
probegroup.set_global_device_channel_indices(np.arange(16))

df = probegroup.to_dataframe()
df

plot_probe_group(probegroup, with_contact_id=True, same_axes=True)
```



Generate a linear probe:

```
from probeinterface import generate_linear_probe

linear_probe = generate_linear_probe(num_elec=16, ypitch=20)
plot_probe(linear_probe, with_contact_id=True)
```



```
(<matplotlib.collections.PolyCollection object at 0x3ff5a0d06e0>, <matplotlib.
collections.PolyCollection object at 0x3ff7e84ec90>)
```

Generate a multi-column probe:

```
from probeinterface import generate_multi_columns_probe

multi_columns = generate_multi_columns_probe(num_columns=3,
                                              num_contact_per_column=[10, 12, 10],
                                              xpitch=22, ypitch=20,
                                              y_shift_per_column=[0, -10, 0],
                                              contact_shapes='square', contact_shape_
↳ params={'width': 12})
plot_probe(multi_columns, with_contact_id=True, )
```



```
(<matplotlib.collections.PolyCollection object at 0x3ff62188f20>, <matplotlib.
collections.PolyCollection object at 0x3ff59fc28d0>)
```

Generate a square probe:

```
square_probe = generate_multi_columns_probe(num_columns=12,
                                             num_contact_per_column=12,
                                             xpitch=10, ypitch=10,
                                             contact_shapes='square', contact_shape_
↳ params={'width': 8})
square_probe.create_auto_shape('rect')
plot_probe(square_probe)

plt.show()
```



Total running time of the script: (0 minutes 0.278 seconds)

1.8 More plotting examples

Here are some examples to showcase several plotting scenarios.

Import

```
import numpy as np
import matplotlib.pyplot as plt

from probeinterface import Probe, ProbeGroup
from probeinterface.plotting import plot_probe, plot_probe_group
from probeinterface import generate_multi_columns_probe, generate_linear_probe
```

Some examples in 2d

```
fig, ax = plt.subplots()

probe0 = generate_multi_columns_probe()
plot_probe(probe0, ax=ax)

# give each probe a different color
```

(continues on next page)

(continued from previous page)

```

probe1 = generate_linear_probe(num_elec=9)
probe1.rotate(theta=15)
probe1.move([200, 0])
plot_probe(probe1, ax=ax,
            contacts_colors=['red', 'cyan', 'yellow'] * 3)

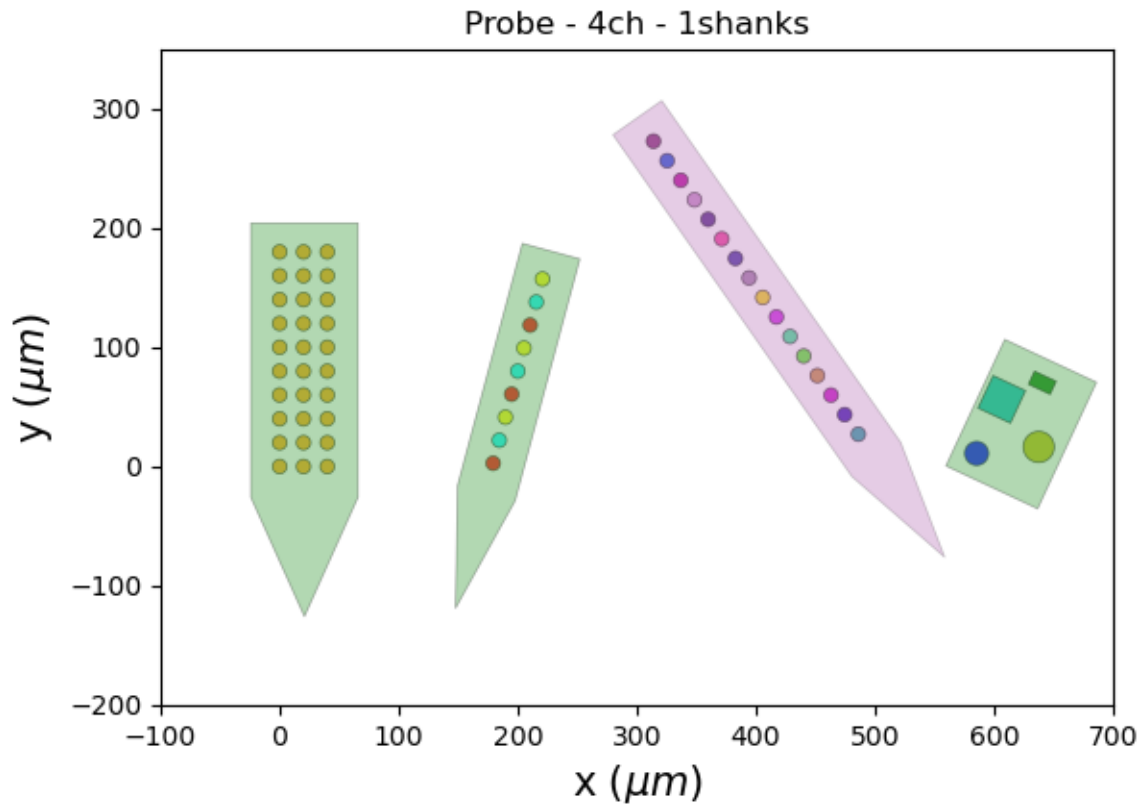
# prepare yourself for carnival!
probe2 = generate_linear_probe()
probe2.rotate(theta=-35)
probe2.move([400, 0])
n = probe2.get_contact_count()
rand_colors = np.random.rand(n, 3)
plot_probe(probe2, ax=ax, contacts_colors=rand_colors,
            probe_shape_kwargs={'facecolor': 'purple', 'edgecolor': 'k', 'lw': 0.5, 'alpha'
                                ↪ ': 0.2'})

# and make some alien probes
probe3 = Probe()
positions = [[0, 0], [0, 50], [25, 77], [45, 27]]
shapes = ['circle', 'square', 'rect', 'circle']
params = [{'radius': 10}, {'width': 30}, {'width': 20, 'height': 12}, {'radius': 13}]
probe3.set_contacts(positions=positions, shapes=shapes,
                    shape_params=params)
probe3.create_auto_shape(probe_type='rect')
probe3.rotate(theta=25)
probe3.move([600, 0])
plot_probe(probe3, ax=ax, contacts_colors=['b', 'c', 'g', 'y'])

ax.set_xlim(-100, 700)
ax.set_ylim(-200, 350)

ax.set_aspect('equal')

```



Some examples in 3d for the romantic who likes flowers...

```
fig = plt.figure()
ax = fig.add_subplot(1, 1, 1, projection='3d')

n = 8
for i in range(n):
    probe = generate_multi_columns_probe(num_columns=3,
                                         num_contact_per_column=[8, 9, 8],
                                         xpitch=20, ypitch=20,
                                         y_shift_per_column=[0, -10, 0]).to_3d()
    probe.rotate(theta=35, center=[0, 0, 0], axis=[0, 1, 0])
    probe.move([100, 50, 0])
    probe.rotate(theta=i * 360 / n, center=[0, 0, 0], axis=[0, 0, 1])
    plot_probe(probe, ax=ax,
               probe_shape_kwargs={'facecolor': ['purple', 'cyan'][i % 2], 'edgecolor':
    ↪ 'k', 'lw': 0.5, 'alpha': 0.2})

probe = generate_linear_probe(num_elec=24, ypitch=20).to_3d()

probe.move([0, 0, -450])
plot_probe(probe, ax=ax)

lims = -450, 450
```

(continues on next page)

(continued from previous page)

```
ax.set_xlim(*lims)
ax.set_ylim(*lims)
ax.set_zlim(*lims)

plt.show()
```

Probe - 24ch - 1shanks



Total running time of the script: (0 minutes 0.237 seconds)

1.9 More complicated probes

This example demonstrates how to generate a more complicated probe with hybrid contacts shape and contact rotations within the *contact_plane_axes* attribute.

```
import numpy as np
import matplotlib.pyplot as plt

from probeinterface import Probe
from probeinterface.plotting import plot_probe
```

Let's first set the positions of the contacts

```
n = 24
positions = np.zeros((n, 2))
for i in range(3):
    positions[i * 8: (i + 1) * 8, 0] = i * 30
    positions[i * 8: (i + 1) * 8, 1] = np.arange(0, 240, 30)
```

Electrode shapes can be arrays to handle hybrid shape contacts

```
shapes = np.array(['circle', 'square'] * 12)
shape_params = np.array([{'radius': 8}, {'width': 12}] * 12)
```

The *plane_axes* argument handles the axis for each contact.

It can be used for contact-wise rotations.

plane_axes has a shape of (num_elec, 2, ndim)

```
plane_axes = [[[1 / np.sqrt(2), 1 / np.sqrt(2)], [-1 / np.sqrt(2), 1 / np.sqrt(2)]]] * n
plane_axes = np.array(plane_axes)
```

Create the probe

```
probe = Probe(ndim=2, si_units='um')
probe.set_contacts(positions=positions, plane_axes=plane_axes,
                  shapes=shapes, shape_params=shape_params)
probe.create_auto_shape()
```

```
plot_probe(probe)
```

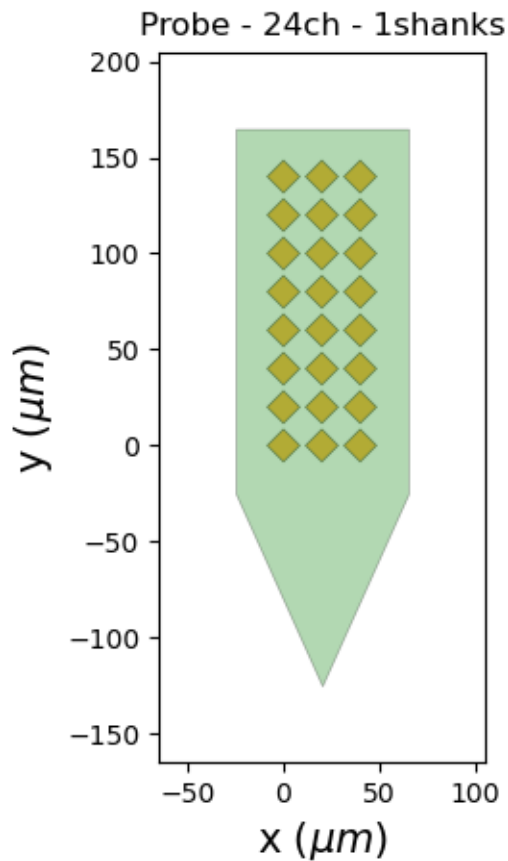


```
(<matplotlib.collections.PolyCollection object at 0x3ff68f9b7d0>, <matplotlib.
collections.PolyCollection object at 0x3ff693253a0>)
```

We can also use the *rotate_contacts* to make contact-wise rotations:

```
from probeinterface import generate_multi_columns_probe

probe = generate_multi_columns_probe(num_columns=3,
                                     num_contact_per_column=8, xpitch=20, ypitch=20,
                                     contact_shapes='square', contact_shape_params={
↳ 'width': 12})
probe.rotate_contacts(45)
plot_probe(probe)
```



```
(<matplotlib.collections.PolyCollection object at 0x3ff5a0f2e70>, <matplotlib.
collections.PolyCollection object at 0x3ff59fdbdd0>)
```

```
probe = generate_multi_columns_probe(num_columns=5,
                                     num_contact_per_column=5, xpitch=20, ypitch=20,
                                     contact_shapes='square', contact_shape_params={
↳ 'width': 12})
thetas = np.arange(25) * 360 / 25
probe.rotate_contacts(thetas)
plot_probe(probe)

plt.show()
```



Total running time of the script: (0 minutes 0.189 seconds)

1.10 Get probe from library

probeinterface provides a library of probes from several manufacturers on the GitHub platform: https://github.com/SpikeInterface/probeinterface_library

Users and manufacturers are welcome to contribute to it.

The Python module provide a function to download and cache files locally in the *probeinterface* json-based format.

```
from pprint import pprint

import numpy as np
import matplotlib.pyplot as plt

from probeinterface import Probe, get_probe
from probeinterface.plotting import plot_probe
```

Download one probe:

```
manufacturer = 'neuronexus'
probe_name = 'A1x32-Poly3-10mm-50-177'
```

(continues on next page)

(continued from previous page)

```
probe = get_probe(manufacturer, probe_name)
print(probe)
```

```
A1x32-Poly3-10mm-50-177 - neuronexus - 32ch - 1shanks
```

Files from the library also contain annotations specific to manufacturers. We can see here that Neuronexus probes have contact indices starting at “1” (one-based)

```
pprint(probe.annotations)
```

```
{'first_index': 1,
 'manufacturer': 'neuronexus',
 'name': 'A1x32-Poly3-10mm-50-177'}
```

When plotting, the channel indices are automatically displayed with one-based notation (even if internally everything is still zero based):

```
plot_probe(probe, with_contact_id=True)
```

A1x32-Poly3-10mm-50-177 - neuronexus - 32ch - 1shanks



```
(<matplotlib.collections.PolyCollection object at 0x3ff6a7e7b90>, <matplotlib.
collections.PolyCollection object at 0x3ff6235c530>)
```

```
plt.show()
```

Total running time of the script: (0 minutes 0.072 seconds)

1.11 Automatic wiring

Here is an example on how to handle the wiring automatically and to get the `device_channel_indices`.

```
from pprint import pprint

import numpy as np
import matplotlib.pyplot as plt

from probeinterface import Probe, get_probe
from probeinterface.plotting import plot_probe
```

Download one probe:

```
manufacturer = 'neuronexus'
probe_name = 'A1x32-Poly3-10mm-50-177'

probe = get_probe(manufacturer, probe_name)
print(probe)
```

```
A1x32-Poly3-10mm-50-177 - neuronexus - 32ch - 1shanks
```

We can “wire” this probe to a recording device. Imagine we connect this Neuronexus probe with an Omnetic to an Intan RHD headstage.

Using the wiring documentation from these two sites: https://neuronexus.com/wp-content/uploads/2018/09/Wiring_H32.pdf http://intantech.com/RHD_headstages.html?tabSelect=RHD32ch&yPos=0

After a long headache we can figure out the wiring to the device manually and set it using the `probe.set_device_channel_indices()` function:

```
device_channel_indices = [
    16, 17, 18, 20, 21, 22, 31, 30, 29, 27, 26, 25, 24, 28, 23, 19,
    12, 8, 3, 7, 6, 5, 4, 2, 1, 0, 9, 10, 11, 13, 14, 15]
probe.set_device_channel_indices(device_channel_indices)
```

In order to ease this process, *probeinterface* also includes some commonly used wirings based on standard connectors. In our case, we can simply use:

```
probe.wiring_to_device('H32>RHD2132')
print(probe.device_channel_indices)
```

```
[16 17 18 20 21 22 31 30 29 27 26 25 24 28 23 19 12  8  3  7  6  5  4  2
  1  0  9 10 11 13 14 15]
```

In this figure we have 2 numbers for each contact:

- the upper number “prbXX” is the Neuronexus index (one-based)
- the lower “devXX” is the channel on the Intan device (zero-based)

```
fig, ax = plt.subplots(figsize=(5, 15))
plot_probe(probe, with_contact_id=True, with_device_index=True, ax=ax)

plt.show()

"""
Available wiring "pathways"
-----

The available pathways can be found in the `probeinterface.wiring <>`_ module.

The following pathways are available:
"""

from probeinterface import get_available_pathways
print(get_available_pathways())
```


A1x32-Poly3-10mm-50-177 - neuronexus - 32ch - 1shanks



```
['H32>RHD2132', 'ASSY-156>RHD2164', 'ASSY-116>RHD2132', 'ASSY-77>Adpt.A64-0m32_2x-sm-NN>
↪ RHD2164', 'ASSY-77>Adpt.A64-0m32_2x-sm-NN>two_RHD2132', 'cambridgeneurotech_mini-amp-64
↪ ']
```

Total running time of the script: (0 minutes 0.122 seconds)

1.12 Plot values

Here is an example of how to plot values with color scales. And also to plot an interpolated image.

```
from pprint import pprint

import numpy as np
import matplotlib.pyplot as plt

from probeinterface import Probe, get_probe
from probeinterface.plotting import plot_probe
```

Download one probe:

```
manufacturer = 'neuronexus'
probe_name = 'A1x32-Poly3-10mm-50-177'

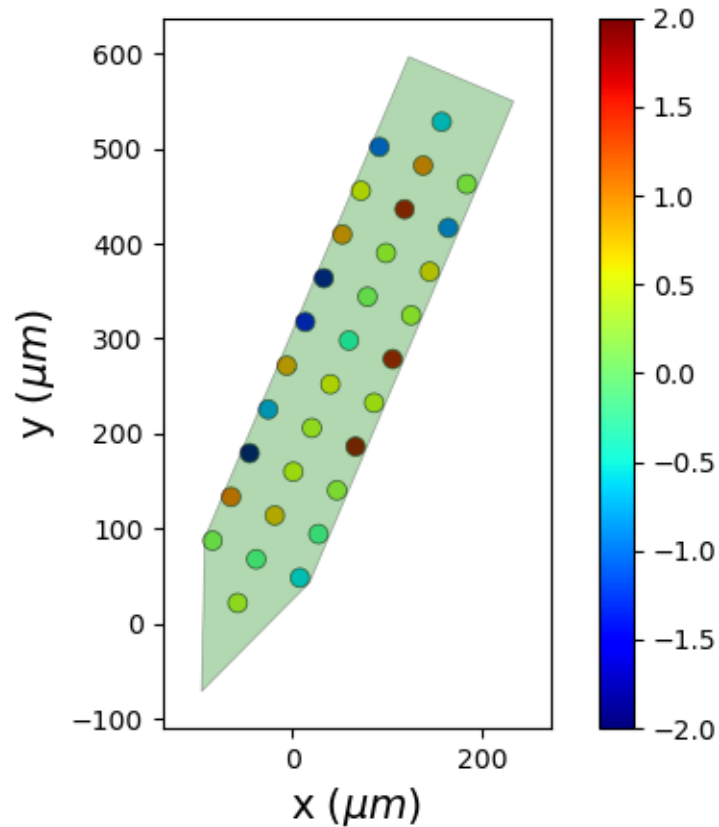
probe = get_probe(manufacturer, probe_name)
probe.rotate(23)
```

fake values

```
values = np.random.randn(32)
```

plot with values

```
fig, ax = plt.subplots()
poly, poly_contour = plot_probe(probe, contacts_values=values,
                                cmap='jet', ax=ax, contacts_kargs={'alpha' : 1}, title=False)
poly.set_clim(-2, 2)
fig.colorbar(poly)
```



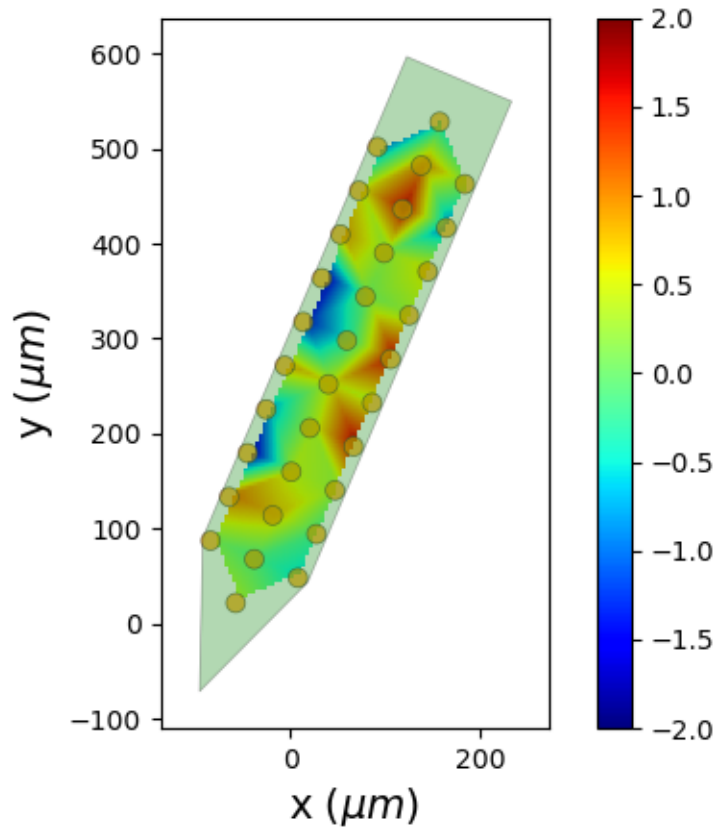
```
<matplotlib.colorbar.Colorbar object at 0x3ff59fda3f0>
```

generated an interpolated image and plot it on top

```
image, xlims, ylims = probe.to_image(values, pixel_size=4, method='linear')

print(image.shape)

fig, ax = plt.subplots()
plot_probe(probe, ax=ax, title=False)
im = ax.imshow(image, extent=xlims+ylims, origin='lower', cmap='jet')
im.set_clim(-2,2)
fig.colorbar(im)
```



```
(127, 67)
```

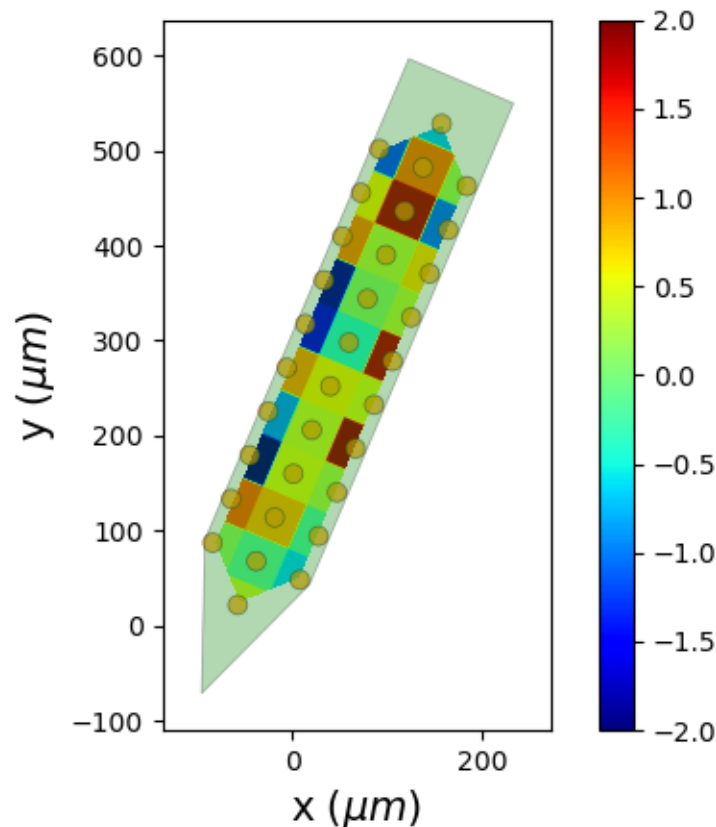
```
<matplotlib.colorbar.Colorbar object at 0x3ff57257e90>
```

works with several interpolation methods

```
image, xlims, ylims = probe.to_image(values, num_pixel=1000, method='nearest')

fig, ax = plt.subplots()
plot_probe(probe, ax=ax, title=False)
im = ax.imshow(image, extent=xlims+ylims, origin='lower', cmap='jet')
im.set_clim(-2,2)
fig.colorbar(im)

plt.show()
```



Total running time of the script: (0 minutes 1.717 seconds)

1.13 Overview

1.13.1 Introduction

To record neural electrical signals, extracellular neural probes are inserted into nervous tissues (e.g. brain, spinal cord). Neural probes are (usually) multi-channel arrays able to record from multiple contacts simultaneously, spanning from a few channels (e.g. tetrodes) to high-density silicon probes (e.g. Neuropixels - with up to 384 recording channels).

These probes (especially silicon probes) generally have a complex layout (or geometry) and can be connected to the recording system in multiple ways (wiring). To connect a neural probe to a recording device (e.g. Open Ephys, Blackrock, Ripple, Plexon, Intan, Multi-channel System) a headstage is used that is connected to the main recording device.

The complexity of the probe wiring and device wiring leads to the difficult task of directly linking the **physical contacts on the probe** and the **logical channel indices on the device**.

Recent *spike sorting* (i.e. methods to extract single neurons' activity from the extracellular recordings) algorithms strongly rely on the probe geometry to exploit the spatial distribution of the contacts and improve their performance.

Therefore, there is a need to correctly handle probe geometry and the wiring to the recording device in an easy-to-use and standardized way.

As an example, imagine you have:

- a **Neuronexus A1x32-Poly2** probe
- with the **intan RHD2132** headstage using the **omnetics 1315** connector
- connected on the **port B of an Open Ephys board**

What would be your final channel mapping be?

Of course one can sit down in the lab and try to figure it out... The goal of **probeinterface** is to make this time-consuming and error-prone process easier and standardized.

1.13.2 Scope

The scope of this project is to handle one (or several) Probe with three simple python classes:

- **Shank**
- *Probe*
- *ProbeGroup*.

These classes handle:

- probe geometry (2D or 3D contact layout)
- probe planar contours (polygon)
- shape and size of the contacts
- probe wiring to the recording device
- combination of several probes: global geometry + global wiring

This package also provide:

- read/write to a common format (JSON based)
- read/write function to other existing formats (PRB, NWB, CSV, MEArec, SpikeGLX, ...)
- plotting routines
- generator functions to create user-defined probes

1.13.3 Goal 1

This common interface could be used by several projects for spike sorting and electrophysiology analysis:

- **SpikeInterface**: integrate this into spikeextractors to handle channel location and wiring
- **NEO**: handle array_annotations for AnalogSignal
- **SpikeForest**: use this package for plotting probe activity
- **Phy**: integrate for probe display
- **SpyKING Circus**: handle probe with this package
- **Kilosort**: handle probe with this package
- ...and more

1.13.4 Goal 2

Implement and maintain a collection of widely used probes in Neuroscience, for example:

- [Neuronexus](#)
- [Cambridge Neurotech](#)

We have started a work-in-progress repo with a [probe library](#)

1.13.5 Existing projects

probeinterface is not the first attempt to build a library of available probes. Here is a list of available resources:

- [JRClust probe library](#) - Matlab format
- [Klusta probe library](#) - PRB format
- [SpyKING Circus probe library](#) - PRB format
- [Justin Kiggins did some script for neuronexus mapping](#)

All of these projects only describe the contact positions. Furthermore there is a strong ambiguity for users between the **contact index on the probe** and the **channel index on device**. This could lead to a wrong interpretation of the wiring.

With probeinterface we try to provide a unified framework for probe description, handling, and a comprehensive probe library.

1.13.6 Acknowledgements

The probeinterface is inspired on the [MEAutility](#) package, written by [Alessio Buccino](#).

While the general idea of having an enhanced probe description is present, the MEAutility package mainly focuses on handling probes for modeling purposes, hence missing the wiring concept, and it can only handle a single probe at a time.

With probeinterface the focus is also to combine several Probes and to handle complex wiring for experimental description.

1.14 Examples

Start here with a tutorial showing probeinterface.

1.15 Format specifications

With probeinterface we introduce a simple format based on the JSON format. The format is a trivial json-serialisation of a Python dictionary. The dictionary maps every attribute of the Probe class.

In fact, the format itself describes a ProbeGroup, so it can include several probes. The format can describe a simple unique probe with its geometry and wiring, as well as a full experimental setup with several probes and their wiring to the recording device.

Here is a description of the fields in the json file.

Let's imagine we want to describe a probe with:

- 8 channels
- 2 shanks (one tetrode on each shank)



The first part contains fields about the `probeinterface` version and a list of probes:

```
{
  "specification": "probeinterface",
  "version": "0.1.0",
  "probes": [
    {
      ...
    }
  ]
}
```


Then each probe will be a sub-dictionary in the probes list:

```
{
  "ndim": 2,
  "si_units": "um",
  "annotations": {
    "name": "2 shank tetrodes",
    "manufacturer": "homemade"
  },
  "contact_positions": [
    ...
  ]
}
```

The probe dictionary contains all necessary fields and optional fields.

Necessary:

- ndim
- si_units
- annotations
- contact_positions
- contact_shapes
- contact_shape_params

Optional:

- contact_plane_axes
- probe_planar_contour
- device_channel_indices
- shank_ids

An example of a full json file:

```
{
  "specification": "probeinterface",
  "version": "0.1.0",
  "probes": [
    {
      "ndim": 2,
      "si_units": "um",
      "annotations": {
        "name": "2 shank tetrodes",
        "manufacturer": "homemade"
      },
      "contact_positions": [
        [
          25.0,
          0.0
        ],
        [
          0.0,
          25.0
        ]
      ]
    }
  ]
}
```

(continues on next page)

(continued from previous page)

```

        [
            -25.0,
            0.0
        ],
        [
            0.0,
            -25.0
        ],
        [
            175.0,
            0.0
        ],
        [
            150.0,
            25.0
        ],
        [
            125.0,
            0.0
        ],
        [
            150.0,
            -25.0
        ]
    ],
    "contact_plane_axes": [
        [
            [
                1.0,
                0.0
            ],
            [
                0.0,
                1.0
            ]
        ],
        [
            [
                1.0,
                0.0
            ],
            [
                0.0,
                1.0
            ]
        ],
        [
            [
                1.0,
                0.0
            ],
            [

```

(continues on next page)

(continues on next page)

(continued from previous page)

```
    ]
  ],
  "contact_shapes": [
    "circle",
    "circle",
    "circle",
    "circle",
    "circle",
    "circle",
    "circle",
    "circle"
  ],
  "contact_shape_params": [
    {
      "radius": 6
    },
    {
      "radius": 6
    },
    {
      "radius": 6
    },
    {
      "radius": 6
    },
    {
      "radius": 6
    },
    {
      "radius": 6
    },
    {
      "radius": 6
    },
    {
      "radius": 6
    }
  ],
  "probe_planar_contour": [
    [
      -45.0,
      85.0
    ],
    [
      -45.0,
      45.0
    ],
    [
      -45.0,
      -45.0
    ],
  ],
```

(continues on next page)

(continued from previous page)

```
[
    [
        0.0,
        -125.0
    ],
    [
        45.0,
        -45.0
    ],
    [
        45.0,
        45.0
    ],
    [
        105.0,
        45.0
    ],
    [
        105.0,
        -45.0
    ],
    [
        150.0,
        -125.0
    ],
    [
        195.0,
        -45.0
    ],
    [
        195.0,
        45.0
    ],
    [
        195.0,
        85.0
    ]
],
"shank_ids": [
    0,
    0,
    0,
    0,
    1,
    1,
    1,
    1
]
}
]
```

1.16 Probeinterface public library

Probeinterface also handles a collection of probe descriptions on the [GitHub platform](#)

The python module has a simple function to download and cache locally by using `get_probe(...)`

```
from probeinterface import get_probe
probe = get_probe(manufacturer='neuronexus',
                  probe_name='A1x32-Poly3-10mm-50-177')
```

We expect to build rapidly commonly used probes in this public repository.

1.16.1 How to contribute

TODO: explain with more details

1. **Generate the JSON file with probeinterface (or directly with another language)**
2. Generate an image of the probe with the `plot_probe` function in probeinterface
3. Clone the [probeinterface_library](#) repo
4. Put the JSON file and image into the correct folder or make a new folder (following the format of the repo)
5. Push to one of your branches with a git client
6. Make a pull request to the main repo

1.17 API

1.17.1 Probe

```
class probeinterface.Probe(ndim: int = 2, si_units: str = 'um', name: str | None = None, serial_number: str | None = None, model_name: str | None = None, manufacturer: str | None = None)
```

Class to handle the geometry of one probe.

This class mainly handles contact positions, in 2D or 3D. Optionally, it can also handle the shape of the contacts and the shape of the probe.

annotate(kwargs)**

Annotates the probe object.

Parameter

****kwargs** : list of kwyword arguments to add to the annotations

property contact_positions

The position of the center for each contact

copy()

Copy to another Probe instance.

Note: device_channel_indices is not copied and contact_ids is not copied

create_auto_shape(*probe_type*: str = 'tip', *margin*: float = 20.0)

Create planar contour automatically based on probe contact positions.

Parameters

probe_type

[str, by default 'tip'] The probe type ('tip' or 'rect')

margin

[float, by default 20.0] The margin to add to the contact positions

static from_dataframe(*df*: pandas.DataFrame)

Create Probe from a pandas.DataFrame see Probe.to_dataframe()

Parameters

df

[pandas.DataFrame] The dataframe representation of the probe

Returns

probe

[Probe] The instantiated Probe object

static from_dict(*d*: dict) → *Probe*

Instantiate a Probe from a dictionary

Parameters

d

[dict] The dictionary representation of the probe

Returns

probe

[Probe] The instantiated Probe object

static from_numpy(*arr*: ndarray)

Create Probe from a complex numpy array see Probe.to_numpy()

Parameters

arr

[np.array] The structured np.array representation of the probe

Returns

probe

[Probe] The instantiated Probe object

get_contact_count() → int

Return the number of contacts on the probe.

get_contact_vertices() → list

Return a list of contact vertices.

get_shank_count() → int

Return the number of shanks for this probe.

get_shanks()

Return the list of Shank objects for this Probe

get_slice(selection: ndarray[bool | int])

Get a copy of the Probe with a sub selection of contacts.

Selection can be boolean or by index

Parameters

selection

[np.array of bool or int (for index)] Either an np.array of bool for desired selection of contacts or the indices of the desired contacts

Returns

sliced_probe: Probe

The sliced probe

move(translation_vector: np.array | list)

Translate the probe in one direction.

Parameters

translation_vector

[list or array] The translation vector in shape 2D or 3D

rotate(theta: float, center=None, axis=None)

Rotate the probe around a specified axis.

Parameters

theta

[float] In degrees, anticlockwise.

center

[array] Center of rotation. If None, the center of probe is used

axis

[None] Axis of rotation. It must be None for 2D probes and specified for 3D ones

rotate_contacts(*thetas*: float | np.array[float] | list[float])

Rotate each contact of the probe. Internally, it modifies the `contact_plane_axes`.

Parameters

thetas

[array of float] Rotation angle in degrees. If scalar, then it is applied to all contacts.

set_contact_ids(*contact_ids*: np.array | list)

Set contact ids. Channel ids are converted to strings. Contact ids must be **unique** for the **Probe** and also for the **ProbeGroup**

Parameters

contact_ids

[list or array] Array with contact ids. If contact_ids are int or float they are converted to str

set_contacts(*positions*, *shapes*='circle', *shape_params*={'radius': 10}, *plane_axes*=None, *contact_ids*=None, *shank_ids*=None)

Sets contacts to a Probe.

This sets four attributes of the probe:

`contact_positions`, `contact_shapes`, `contact_shape_params`, `_contact_plane_axes`

Parameters

positions

[array (num_contacts, ndim)] Positions of contacts (2D or 2D depending on probe 'ndim').

shapes

[str or array] Shape of each contact ('circle'/'square'/'rect').

shape_params

[dict or list of dict] Contains kwargs for shapes ("radius" for circle, "width" for square, "width/height" for rect)

plane_axes

[np.array (num_contacts, 2, ndim)] Defines the two axes of the contact plane for each electrode. The third dimension corresponds to the probe *ndim* (2d or 3d).

contact_ids: None or array of str

Defines the contact ids for the contacts. If None, contact ids are not assigned.

shank_ids

[None or array of str] Defines the shank ids for the contacts. If None, then these are assigned to a unique Shank.

set_device_channel_indices(*channel_indices: np.array | list*)

Manually set the device channel indices.

If some channels are not connected or not recorded then channel should be set to “-1”

Parameters**channel_indices**

[array of int] The device channel indices to set

set_planar_contour(*contour_polygon: list*)

Set the planar countour (the shape) of the probe.

Parameters**contour_polygon**

[list] List of contour points (2D or 3D depending on ndim)

set_shank_ids(*shank_ids: np.array | list*)

Set shank ids.

Parameters**shank_ids**

[list or array] Array with shank ids, if int or float converted to strings

to_2d(*axes: str = 'xy'*)

Transform 3d probe to 2d probe.

Note: device_channel_indices is not copied.

Parameters**plane**

[str] The plane on which the 2D probe is defined. ‘xy’, ‘yz’, ‘xz’

to_3d(*axes: str = 'xz'*)

Transform 2d probe to 3d probe.

Note: device_channel_indices is not copied.

Parameters

axes

[str, default “xz”] The axes that define the plane on which the 2D probe is defined. ‘xy’, ‘yz’, ‘xz’

to_dataframe(*complete: bool = False*) → pandas.DataFrame

Export the probe to a pandas dataframe

Parameters

complete

[bool, default False] If True, export complete information about the probe, including the probe plane axis.

Returns

df

[pandas.DataFrame] The dataframe representation of the probe

to_dict(*array_as_list: bool = False*) → dict

Create a dictionary of all necessary attributes. Useful for dumping and saving to json.

Parameters

array_as_list

[bool, default False] If True, arrays are converted to lists

Returns

d

[dict] The dictionary representation of the probe

to_image(*values: np.array | list, pixel_size: float = 0.5, num_pixel: int | None = None, method: str = 'linear', xlims: tuple | None = None, ylims: tuple | None = None*) → tuple[np.ndarray, tuple, tuple]

Generated a 2d (image) from a values vector with an interpolation into a grid mesh.

Parameters

values :

vector same size as contact number to be color plotted

pixel_size :

size of one pixel in micrometers

num_pixel :

alternative to pixel_size give pixel number of the image width

method

[str, default ‘linear’] One of the options: ‘linear’ or ‘nearest’ or ‘cubic’

xlims

[Optional[tuple], default None] Force image xlims

ylims
[Optional[tuple], default None] Force image ylims

Returns

image
[2d array] The generated image

xlims
[tuple] The x limits

ylims
[tuple] The y limits

to_numpy(*complete: bool = False*) → array

Export to a numpy vector (structured array). This vector handles all contact attributes.

Equivalent to the 'to_dataframe()' pandas function, but without pandas dependency.

Very useful to export/slice/attach to a recording.

Parameters

complete
[bool, default False] If True, export complete information about the probe, including contact_plane_axes/si_units/device_channel_indices

returns

arr
[numpy.array] With complex dtype

wiring_to_device(*pathway: str, channel_offset: int = 0*)

Automatically set device_channel_indices based on a pathway.

See probeinterface.get_available_pathways()

Parameters

pathway
[str] The pathway. E.g. 'H32>RHD'

channel_offset: int, default 0
An optional offset to add to the device_channel_indices

1.17.2 ProbeGroup

class probeinterface.ProbeGroup

Class to handle a group of Probe objects and the global wiring to a device.

Optionally, it can handle the location of different probes.

auto_generate_contact_ids(*args, **kwargs)

Annotate all contacts with unique contact_id values.

Parameters

*args: will be forwarded to *probeinterface.utils.generate_unique_ids* **kwargs: will be forwarded to *probeinterface.utils.generate_unique_ids*

auto_generate_probe_ids(*args, **kwargs)

Annotate all probes with unique probe_id values.

Parameters

*args: will be forwarded to *probeinterface.utils.generate_unique_ids* **kwargs: will be forwarded to *probeinterface.utils.generate_unique_ids*

static from_dict(d)

Instantiate a ProbeGroup from a dictionary

Parameters

d
[dict] The dictionary representation of the probegroup

Returns

probegroup
[ProbeGroup] The instantiated ProbeGroup object

get_contact_count()

Total number of channels.

get_global_contact_ids()

get all contact ids concatenated across probes

get_global_device_channel_indices()

return a numpy array vector with 2 columns (probe_index, device_channel_indices)

Note:

channel -1 means not connected

set_global_device_channel_indices(channels)

Set global indices for all probes

to_dict(array_as_list=False)

Create a dictionary of all necessary attributes.

Parameters

array_as_list

[bool, optional] If True, arrays are converted to lists, by default False

Returns

d

[dict] The dictionary representation of the probegroup

to_numpy(*complete=False*)

Export all probes into a numpy array.

1.17.3 Import/export to formats

Read/write probe info using a variety of formats:

- probeinterface (.json)
- PRB (.prb)
- CSV (.csv)
- mearec (.h5)
- spikeglx (.meta)
- ironclust/jrclust (.mat)
- Neurodata Without Borders (.nwb)

`probeinterface.io.read_probeinterface`(*file: str | Path*) → *ProbeGroup*

Read probeinterface JSON-based format.

Parameters

file: Path or str

The file path

Returns

probegroup : *ProbeGroup* object

`probeinterface.io.write_probeinterface`(*file: str | Path, probe_or_probegroup: Probe | ProbeGroup*)

Write a probeinterface JSON file.

The format handles several probes in one file.

Parameters

file

[Path or str] The file path

probe_or_probegroup

[Probe or ProbeGroup object] If probe is given a probegroup is created anyway

`probeinterface.io.read_prb(file: str | Path) → ProbeGroup`

Read a PRB file and return a ProbeGroup object.

Since PRB does not handle contact shapes, contacts are set to be circle of 5um radius. Same for the probe shape, where an auto shape is created.

PRB format does not contain any information about the channel of the probe Only the channel index on device is given.

Parameters

file

[Path or str] The file path

Returns

probegroup : ProbeGroup object

`probeinterface.io.write_prb(file: str, probegroup: ProbeGroup, total_nb_channels: int | None = None, radius: float | None = None, group_mode: str = 'by_probe')`

Write ProbeGroup into a prb file.

This format handles:

- multi Probe with channel group index key
- channel positions with “geometry”
- device_channel_indices with “channels” key

Note: much information is lost in the PRB format:

- contact shape
- shape
- channel index

Note:

- “total_nb_channels” is needed by spyking-circus
- “radius” is needed by spyking-circus
- “graph” is not handled

Parameters

file: str

The name of the file to be written

probegroup: ProbeGroup

The Probegroup to be used for writing

total_nb_channels: Optional[int], default None

***to do

radius: Optional[float], default None

*** to do

group_mode: str

One of “by_probe” or “by_shank

probeinterface.io.read_csv(file: str | Path)

Return a 2 or 3 columns csv file with contact positions

probeinterface.io.write_csv(file, probe)

Write contact postions into a 2 or 3 columns csv file

probeinterface.io.read_spikeglx(file: str | Path) → Probe

Read probe position for the meta file generated by SpikeGLX

See <http://billkarsh.github.io/SpikeGLX/#metadata-guides> for implementation. The x_pitch/y_pitch/width are set automatically depending the NP version.

The shape is auto generated as a shank.

Now reads:

- NP0.0 (=phase3A)
- NP1.0 (=phase3B2)
- NP2.0 with 4 shank
- NP1.0-NHP

Parameters

file

[Path or str] The .meta file path

Returns

probe : Probe object

probeinterface.io.read_mearec(file: str | Path) → Probe

Read probe position, and contact shape from a MEArec file.

See <https://mearec.readthedocs.io/en/latest/> and <https://doi.org/10.1007/s12021-020-09467-7> for implementation.

Parameters

file

[Path or str] The file path

Returns

probe : Probe object

probeinterface.io.read_nwb(*file*)

Read probe position from an NWB file

1.17.4 Probe generators

This module contains useful helper functions for generating probes.

probeinterface.generator.generate_dummy_probe(*elec_shapes: str = 'circle'*) → *Probe*

Generate a dummy probe with 3 columns and 32 contacts. Mainly used for testing and examples.

Parameters

elec_shapes

[str, , by default 'circle'] Shape of the electrodes with possibilities of ('circle', 'square', 'rect')

Returns

probe

[Probe] The generated probe

probeinterface.generator.generate_dummy_probe_group() → *ProbeGroup*

Generate a ProbeGroup with 2 probes. Mainly used for testing and examples.

Returns

probe

[Probe] The generated probe

probeinterface.generator.generate_tetrode(*r: float = 10*) → *Probe*

Generate a tetrode Probe. Parameters ——— r: float

The distance multiplier for the positions

Returns

probe

[Probe] The generated probe

```
probeinterface.generator.generate_multi_columns_probe(num_columns: int = 3,  
                                                    num_contact_per_column: int = 10, xpitch:  
                                                    float = 20, ypitch: float = 20,  
                                                    y_shift_per_column: np.array | list | None =  
                                                    None, contact_shapes: str = 'circle',  
                                                    contact_shape_params: dict = {'radius': 6})  
→ Probe
```

Generate a Probe with several columns.

Parameters

num_columns

[int, by default 3] Number of columns

num_contact_per_column

[int, by default 10] Number of contacts per column

xpitch

[float, by default 20] Pitch in x direction

ypitch

[float, by default 20] Pitch in y direction

y_shift_per_column

[array-like, optional] Shift in y direction per column. It needs to have the same length as num_columns, by default None

contact_shapes

[str, by default 'circle'] Shape of the contacts ('circle', 'rect', 'square')

contact_shape_params

[dict, default {'radius': 6}] Parameters for the shape. For circle: {"radius": float} For square: {"width": float} For rectangle: {"width": float, "height": float}

Returns

probe

[Probe] The generated probe

```
probeinterface.generator.generate_linear_probe(num_elec: int = 16, ypitch: float = 20, contact_shapes:  
                                              str = 'circle', contact_shape_params: dict = {'radius':  
                                              6}) → Probe
```

Generate a one-column linear probe.

Parameters

num_elec

[int] Number of electrodes, by default 16

ypitch

[float] Pitch in y direction, by default 20

contact_shapes

[str, default 'circle'] Shape of the contacts ('circle', 'rect', 'square')

contact_shape_params

[dict, default {'radius': 6}] Parameters for the shape. For circle: {"radius": float} For square: {"width": float} For rectangle: {"width": float, "height": float}

Returns

probe

[Probe] The generated probe

1.17.5 Plotting

A simple implementation for plotting a Probe or ProbeGroup using matplotlib.

Depending on Probe.ndim, the plotting is done in 2D or 3D

```
probeinterface.plotting.plot_probe(probe, ax=None, contacts_colors=None, with_contact_id=False,
                                   with_device_index=False, text_on_contact=None,
                                   contacts_values=None, cmap='viridis', title=True, contacts_kargs={},
                                   probe_shape_kwargs={}, xlims=None, ylims=None, zlims=None,
                                   show_channel_on_click=False)
```

Plot a Probe object. Generates a 2D or 3D axis, depending on Probe.ndim

Parameters

probe

[Probe] The probe object

ax

[matplotlib.axis, optional] The axis to plot the probe on. If None, an axis is created, by default None

contacts_colors

[matplotlib color, optional] The color of the contacts, by default None

with_contact_id

[bool, optional] If True, channel ids are displayed on top of the channels, by default False

with_device_index

[bool, optional] If True, device channel indices are displayed on top of the channels, by default False

text_on_contact: None or list or numpy.array

Additional text to plot on each contact

contacts_values

[np.array, optional] Values to color the contacts with, by default None

cmap

[str, optional] [description], by default 'viridis'

title

[bool, optional] If True, the axis title is set to the probe name, by default True

contacts_kargs

[dict, optional] Dict with kargs for contacts (e.g. alpha, edgecolor, lw), by default { }

probe_shape_kargs

[dict, optional] Dict with kargs for probe shape (e.g. alpha, edgecolor, lw), by default { }

xlims

[tuple, optional] Limits for x dimension, by default None

ylims

[tuple, optional] Limits for y dimension, by default None

zlims

[tuple, optional] Limits for z dimension, by default None

show_channel_on_click

[bool, optional] If True, the channel information is shown upon click, by default False

Returns**poly**

[PolyCollection] The polygon collection for contacts

poly_contour

[PolyCollection] The polygon collection for the probe shape

`probeinterface.plotting.plot_probe_group(probegroup, same_axes=True, **kargs)`

Plot all probes from a ProbeGroup Can be in an existing set of axes or separate axes.

Parameters**probegroup**

[ProbeGroup] The ProbeGroup to plot

same_axes

[bool, optional] If True, the probes are plotted on the same axis, by default True

1.17.6 Library

Provides functions to download and cache pre-existing probe files from some manufacturers.

The library is hosted here: https://gin.g-node.org/spikeinterface/probeinterface_library

The gin platform enables contributions from users.

`probeinterface.library.get_probe(manufacturer: str, probe_name: str, name: str | None = None) → Probe`

Get probe from ProbeInterface library

Parameters

manufacturer

[str] The probe manufacturer (e.g. ‘cambridgeneurotech’, ‘neuronexus’)

probe_name

[str] The probe name

name

[str or None] Optional name for the probe

Returns

probe : Probe object

1.18 Release notes

1.18.1 probeinterface 0.2.19

Nov, 2nd 2023

Features

- Unify NP reading with probe part number (#232)

1.18.2 probeinterface 0.2.18

Oct, 30th 2023

Features

- Extend probe constructor (name, serial_number, manufacturer, model_name) (#206)
- Extend available NP2 probe types to commercial types (20** series) (#217)
- Remove with_channel_index argument from plot_probe (#229)
- Remove checker for unique contact ids in probe group (#229)
- Unify usage of “contact” and remove “channel” notation (except for “device_channel_index”) (#229)

Bug fixes

- Fix shank_pitch to NP-2.4 in SpikeGLX (#205)
- Fix y_shift_per_column docs and add assertion (#212)
- Change np.in1d to np.isin as the former will be deprecated (#220)
- Fix contour of NP2.0 for Open Ephys Neuropixels (#224)

Docs

- Add available pathways in ‘Automatic wiring’ docs (#213)
- Add Typing and Update Docstrings (#214)
- Add more details to how to contribute (#222)

1.18.3 probeinterface 0.2.17

Thanks a lot to Ramon Heberto Mayorquin, who did the most the changes for this release.

June, 26th 2023

Packaging / Documentation / Testing

- Move probe libray from [GIN](#) to [GitHub](#) (#195)
- Restructure repo to follow `src/probeinterface` convention
- Black formatting anf pre-commit CI (#190-#191)
- Add safe import utils (#175)
- Add type hints in IO module (#173)
- Fix code coverage (#171)
- Cron job and manual trigger for CI tests (#170)
- Add badges and code coverage to actions (#168)
- Handle temporary files in the test suite (#164)
- Reorganize testing directory (#163)
- Update test workflow to use latest version of actions (#162)
- Add MEArec test data (#176)
- Add Maxwell and 3brain to tests (#172)
- Add test for shank (#181)
- Improve Documentation (#157 / 158)

Features

- Extended support for Neuropixels probes: * Fix CatGT parsin (#193) * Map NP1010 probe to the usual NP1 geometry (#188) * Open Ephys: Support subselection of channels in Record Node (#180) * Add NP-ultra probe testing data for spikeglx (#177) * Add IMRO tests (#179) * Consolidate Neuropixels information in one place (#174) * Refactor NP information (#166-#167) * Add NHP probe support for SpikeGLX (#169-#165-#160-#156)

Bug fixes

- Fix DeprecationWarning: invalid escape sequence m (#183)
- Mearec description to string (#159)

Testing

- Add MEArec test data (#176)
- Add Maxwell and 3brain to tests (#172)
- Add test for shank (#181)

1.18.4 probeinterface 0.2.16

February, 9th 2023

- Fix for read_spikeglx() when not all channels are saved

1.18.5 probeinterface 0.2.15

December, 12th 2022

- Bug fix when parsing Open Ephys version from XML file (<https://github.com/SpikeInterface/probeinterface/pull/146>)
- Add test files and tests for Open Ephys reader

1.18.6 probeinterface 0.2.14

October, 27th 2022

- Fix a **important bug** in read_spikeglx() / read_imro() that was leading to wrong contact locations when the Imec Readout Table (aka imRo) was set with complex multi-bank patterns. The bug was introduced with version **0.2.10**, released on September 1st 2022, and it is also present in these versions: **0.2.10**, **0.2.11**, **0.2.12**, and **0.2.13**.

If you used spikeinterface/probeinterface with SpikeGLX data using one of these versions, we recommend you to check your contact positions (if they are non-standard - using the probe tip) and re-run your spike-sorting analysis if they are wrong.

A big thanks to Tom Bugnon and Graham Findlay for [spotting the bug](#).

1.18.7 probeinterface 0.2.13

October, 20th 2022

- Fix install bug due to pyproject.toml
- Better handling of contact ids for unknown NP type in OpenEphy
- Including ability to read phase3A neuropixel arrays

1.18.8 probeinterface 0.2.12

October, 10th 2022

- New configuration files with pyproject.toml

1.18.9 probeinterface 0.2.11

September, 14th 2022

- do not rely on BASESTATION field to parse OpenEphys probe

1.18.10 probeinterface 0.2.10

September, 1st 2022

- fix read_openephys()
- fix read_spikeglx()
- regenerate cambridge neurotec
- implement read_imro() / write_imro()
- Add new wiring : 'ASSY-77>Adpt.A64-Om32_2x-sm>two_RHD2132'
- Handle OpenEphys NPIX with multiple probes
- Add cross-checked ASSY-116>RHD2132 mapping

1.18.11 probeinterface 0.2.9

April, 15th 2022

- openephys neuropixel
- fix examples

1.18.12 probeinterface 0.2.8

March, 23rd 2022

- wiring CambridgeNeurotec mini-amp-64
- expose function select_dimensions (2d>3d and 3d>2d)
- add to_dict/from_dict in ProbeGroup
- Add "text_on_contact" in plot_probe()
- Add read_openephys function for Neuropux-PXI plugin

1.18.13 probeinterface 0.2.7

March, 1 2022

- add read_3brain to io
- annotate spikeGLX with probe version

1.18.14 probeinterface 0.2.6

November, 26 2021

- documentation improvement
- spikeglx neuropixel2 integration
- plotting improvement

1.18.15 probeinterface 0.2.5

September, 14 2021

- vector annotations added to numpy representation
- add “electrode” to annotations from read_maxwell

1.18.16 probeinterface 0.2.4

July, 30 2021

- expose read_maxwell function
- vector annotations
- changes to BIDS format

1.18.17 probeinterface 0.2.3

May, 21 2021

- add a pathway
- show_channel_on_click
- debug read_mearec()

1.18.18 probeinterface 0.2.2

April, 4 2021

- better plot_probe with index
- write_prb handle group_mode
- add wiring RDH2164
- doc improvement

1.18.19 probeinterface 0.2.1

March, 24 2021

- read/write to BIDS proposal.
- to_numpy()/from_numpy()
- to_dataframe()/from_dataframe()
- read_mearec

1.18.20 probeinterface 0.2.0

March, 2 2021

Format improvement with all ids in str.

1.18.21 probeinterface 0.1.0

11th jan 2021

Initial release.

PYTHON MODULE INDEX

p

- `probeinterface`, [57](#)
- `probeinterface.generator`, [61](#)
- `probeinterface.io`, [58](#)
- `probeinterface.library`, [64](#)
- `probeinterface.plotting`, [63](#)

A

`annotate()` (*probeinterface.Probe* method), 50
`auto_generate_contact_ids()` (*probeinterface.ProbeGroup* method), 57
`auto_generate_probe_ids()` (*probeinterface.ProbeGroup* method), 57

C

`contact_positions` (*probeinterface.Probe* property), 50
`copy()` (*probeinterface.Probe* method), 50
`create_auto_shape()` (*probeinterface.Probe* method), 50

F

`from_dataframe()` (*probeinterface.Probe* static method), 51
`from_dict()` (*probeinterface.Probe* static method), 51
`from_dict()` (*probeinterface.ProbeGroup* static method), 57
`from_numpy()` (*probeinterface.Probe* static method), 51

G

`generate_dummy_probe()` (in module *probeinterface.generator*), 61
`generate_dummy_probe_group()` (in module *probeinterface.generator*), 61
`generate_linear_probe()` (in module *probeinterface.generator*), 62
`generate_multi_columns_probe()` (in module *probeinterface.generator*), 62
`generate_tetrode()` (in module *probeinterface.generator*), 61
`get_contact_count()` (*probeinterface.Probe* method), 52
`get_contact_count()` (*probeinterface.ProbeGroup* method), 57
`get_contact_vertices()` (*probeinterface.Probe* method), 52
`get_global_contact_ids()` (*probeinterface.ProbeGroup* method), 57

`get_global_device_channel_indices()` (*probeinterface.ProbeGroup* method), 57
`get_probe()` (in module *probeinterface.library*), 64
`get_shank_count()` (*probeinterface.Probe* method), 52
`get_shanks()` (*probeinterface.Probe* method), 52
`get_slice()` (*probeinterface.Probe* method), 52

M

module
 probeinterface, 50, 57
 probeinterface.generator, 61
 probeinterface.io, 58
 probeinterface.library, 64
 probeinterface.plotting, 63
`move()` (*probeinterface.Probe* method), 52

P

`plot_probe()` (in module *probeinterface.plotting*), 63
`plot_probe_group()` (in module *probeinterface.plotting*), 64
Probe (class in *probeinterface*), 50
ProbeGroup (class in *probeinterface*), 57
probeinterface
 module, 50, 57
probeinterface.generator
 module, 61
probeinterface.io
 module, 58
probeinterface.library
 module, 64
probeinterface.plotting
 module, 63

R

`read_csv()` (in module *probeinterface.io*), 60
`read_mearec()` (in module *probeinterface.io*), 60
`read_nwb()` (in module *probeinterface.io*), 61
`read_prb()` (in module *probeinterface.io*), 59
`read_probeinterface()` (in module *probeinterface.io*), 58
`read_spikeglx()` (in module *probeinterface.io*), 60
`rotate()` (*probeinterface.Probe* method), 52

`rotate_contacts()` (*probeinterface.Probe method*), 53

S

`set_contact_ids()` (*probeinterface.Probe method*), 53

`set_contacts()` (*probeinterface.Probe method*), 53

`set_device_channel_indices()` (*probeinterface.Probe method*), 54

`set_global_device_channel_indices()` (*probeinterface.ProbeGroup method*), 57

`set_planar_contour()` (*probeinterface.Probe method*), 54

`set_shank_ids()` (*probeinterface.Probe method*), 54

T

`to_2d()` (*probeinterface.Probe method*), 54

`to_3d()` (*probeinterface.Probe method*), 54

`to_dataframe()` (*probeinterface.Probe method*), 55

`to_dict()` (*probeinterface.Probe method*), 55

`to_dict()` (*probeinterface.ProbeGroup method*), 57

`to_image()` (*probeinterface.Probe method*), 55

`to_numpy()` (*probeinterface.Probe method*), 56

`to_numpy()` (*probeinterface.ProbeGroup method*), 58

W

`wiring_to_device()` (*probeinterface.Probe method*), 56

`write_csv()` (*in module probeinterface.io*), 60

`write_prb()` (*in module probeinterface.io*), 59

`write_probeinterface()` (*in module probeinterface.io*), 58