



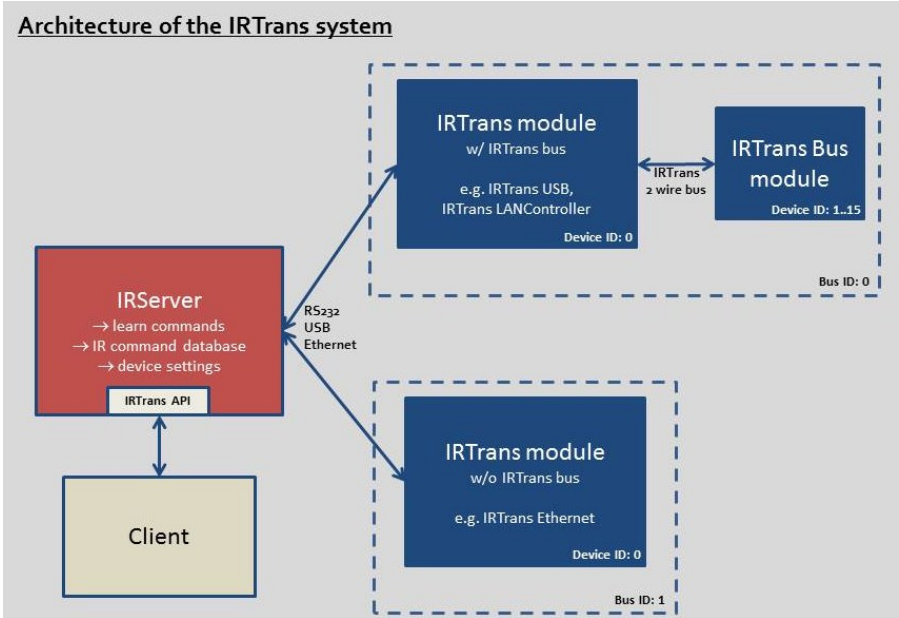
# Software manual

# Inhalt

<b>1. Introduction .....</b>	<b>4</b>
<b>2. IRTrans Server .....</b>	<b>5</b>
2.1 Installing the software and first tests .....	5
2.2 launching the IRTrans Server automatically .....	5
2.2.1 IRServer as Windows service .....	6
2.3 IRServer menu .....	6
2.4 IRServer parameters .....	7
<b>3. IR Database .....</b>	<b>8</b>
3.1 Learning IR commands .....	8
3.1.1 special modes .....	10
3.1.2 additional parameters .....	10
3.2 Database files (.rem) .....	12
3.3 learn CCF codes .....	12
3.4 Linked commands .....	13
3.5 Import IRTrans HEX .....	13
3.6 add RS232 command .....	13
<b>4. Sending IR codes .....</b>	<b>14</b>
4.1 IRTrans GUI Client .....	14
4.2 IRTrans ASCII (Batch) Client .....	15
4.2.1 sending IR commands .....	15
4.2.2 IR Database .....	15
<b>5. settings .....</b>	<b>16</b>
5.1 Device Status Dialogue .....	16
5.1.1 General .....	16
5.1.2 IR receive .....	17
5.1.3 IR Codes .....	19
5.1.4 Device Info / Firmwareupdate .....	20
5.1.5 WLAN / IP .....	21
5.1.6 IP Access .....	22
5.1.7 IP Relay .....	23
5.1.8 IR Bus .....	24
5.1.9 Power On .....	25
5.1.10 RS232 .....	26

<b>5. settings (cont.)</b>	
5.2 Webinterface .....	27
5.3 IRConfig für Windows.....	27
5.4 IRConfig JAVA application .....	28
<b>6. Clients .....</b>	<b>28</b>
6.1 APIs .....	28
<b>7. Advanced options .....</b>	<b>29</b>
7.1 Devices with integrated IR database (IRDB) .....	29
7.2 Administration of the IRDB .....	29
7.3 IR Translation .....	31
7.4 advanced IRServer configuration .....	34
7.4.1 IRServer command line options .....	35
7.5 Database files (additional information) .....	36
7.6.1 IRTrans standard format .....	36
7.6.2 IRTrans RAW Format .....	37
7.6 IRRemote .....	38

# 1. Introduction



Overview: Architecture of the IRTrans system

## Architecture of the IRTrans system.

The IRTrans software is based on a Client / Server structure. Access to the IR-Trans hardware is handled by the IRServer. This way it is usually not necessary to change client software when updating the IRTrans firmware. The IRServer software is available for Windows, MAC and Linux based platforms.

There are several ways to issue commands to the IRServer. Either by software on the PC running the server or via local network or even the internet (VPN).

The basic functions of the IRServer are:

- Cofigure IRTrans modules (device settings)
- IR command database
- Learn new IR commands
- Send IR commands
- Decode received IR codes (also for troubleshooting)
- Log errors and diagnostic information

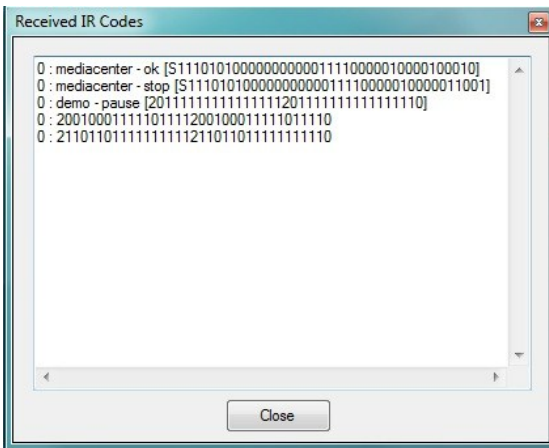
## 2. IRTrans Server

### 2.1 Installing the software and first tests

The core of the IRTrans system is the IRServer application. The setup program (setup.exe) installs the IRServer as well as other tools with default settings for the type of IRTrans module chosen during the installation process. These settings can be modified, for simplicity it is best to choose the type of IRTrans module that will be used during initial testing.

The installation program creates (unless otherwise selected during installation) start menu shortcuts to the IRTrans software. After the installation is finished the IRServer can be started. The IRServer will search for IRTrans devices automatically and launch as a taskbar utility. The IRServer functions can be accessed by right clicking the IRTrans taskbar icon.

Detected IR commands are displayed in the window „Detected IR commands“. Testing the software can now be done by pointing an IR remote to the IRTrans and pressing a button.



If the received command is already learned it is decoded and shown as „remote - command“.

Unknown commands are displayed as „raw“ data in the IRTrans standard format (ref. to 3.2.1).

Normally you will get raw data because most likely the commands are not included in the small database that comes with the IRTrans. The next step is to learn the IR codes. This is covered in detail in chapter 3.1.

### 2.2 launching the IRServer automatically upon system startup

Mostly the IRServer should be started automatically on system startup.

**On Windows** the IRServer shortcut/link simply can be copied to the Autostart folder. The IRServer launches automatically to the taskbar.

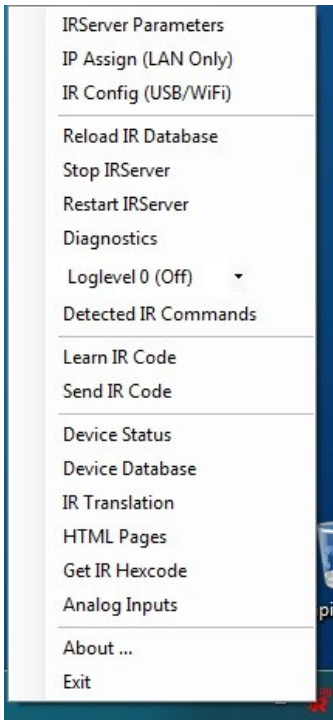
**On Linux** there has to be made an entry to a .rc file. Starting the IRServer with the parameter „-daemon“ launches the server as a background process.

### 2.2.1 IRServer as Windows service

During setup the IRServer may be installed as a Windows service. This is only recommended for experienced users since access rights to services are very limited. Additionally when running as a service the IRServer **can not** control the PC because services are not allowed to emulate keyboard or mouse inputs.

### 2.3 IRServer menu

When the IRServer is running access to the IRServer context menu can be gained by right clicking the IRTrans taskbar icon. All the Servers' as well as the IR-Trans modules' settings are accessible out of this menu.



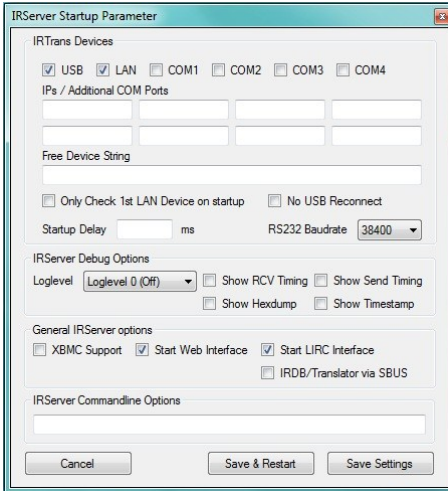
IRServer context menu

Diagnostics allow viewing of informational messages by the IRTrans Server as well as monitoring detected IR commands.

The IRServer context menu offers all the selections available in the GUIClient mode selection as well.

Maybe the IRTrans icon is not visible. Windows hides some of the taskbar icons to save space. Hidden Taskbar utilities are accessible by clicking the small arrow. Which symbols are hidden can be configured by the windows control panel.

## 2.4 IRServer parameters



Configuration dialogue of the IRServer

Altering IRServer settings can be done using the IRServer Parameter dialogue. This dialogue can be accessed out of the taskbar utilities context menu.

### IRTrans Devices

Here you can select where the IRServer will search for IRTrans devices on startup.

If there are IRTrans Ethernet devices with fixed IPs or COM ports the addresses can be entered directly.

Using the textbox „free device string“ a device string as it would be used in a shell can be entered (ref. to command line options).

### IRServer Debug Options

This can be used to enable debug information and control what type of messages the debugger displays. The debug option is set to off by default.

### General IRServer Options

These are general options for the IRServer. For example the Web Interface can be disabled if not used.

### IRServer Commandline Options

Additional options can be entered with command line parameters.



After changing settings restarting the IRServer is required for the settings to take effect.

### 3. IR database

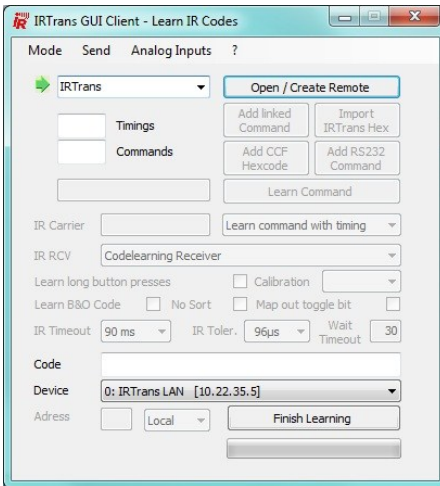
#### 3.1 learning IR commands

Learning IR codes can be done by the „learn command“ dialogue which is accessible through the „mode“ menu of the GUIClient or the IRServer taskbar utility.

First a remote must be selected. Enter a new name to the textbox or select a remote in the dropdown menu.

This name is also the filename for the IR command database file.

When selecting an existing remote this database file will be amended with new commands and already existing commands will be overwritten.



First select a remote or write a new name to the textbox. „Open / Create Remote“ opens the remote for learning.

Select the appropriate device if more than one IRTrans is connected.



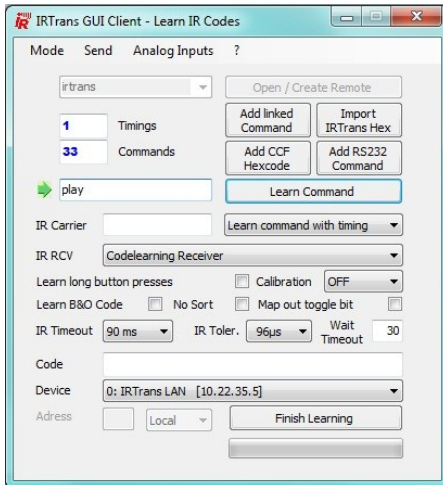
Remote and command names are **not case sensitive**.



IRTrans only supports basic ASCII characters. Special characters and mutated vowels will result in errors.



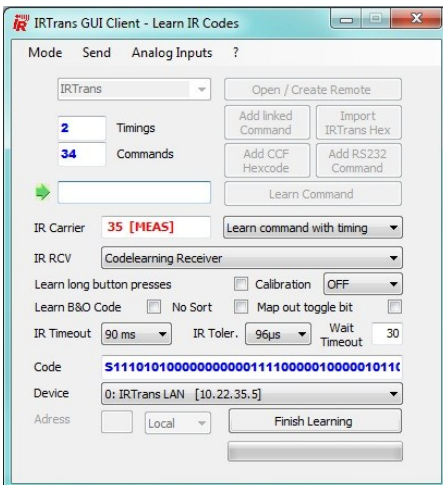
After naming the remote commands can be learned. For learning the remote should be held at a distance of about 0.5m/2ft from the IRTrans. Holding the remote closer to the IRTrans may result in overdriving the receiver. Then the IR codes will not work correctly. Additionally the button of the remote should only be pressed as short as possible.



Now new commands can be learned: Assign a name for the command and click on „Learn Command“. After that the button on the remote has to be pressed briefly.

Usually commands are learned in „Learn command with timing“ mode

The software will output the detected IR code and in case the universal codelearning receiver is used the measured frequency:



After successfully learning a command the window should look like this.

Repeat these steps for all commands you want to learn.

### 3.1.1 special modes

The default settings most likely do not need to be modified but there are few cases when special learning modes are delivering better results.

#### Learning Repeat Codes

Some remotes use a different code when holding a button. This mode can be used to learn these type of codes. When using this learning mode hold down the button for a few seconds.

#### RAW mode

The IRTrans firmware normally decodes IR commands and stores them in a less space consuming format. Refer to database format for details. In rare cases this will not work correctly so it may be necessary to store the command as raw data. Storing commands this way requires multiple times the memory so this mode is only recommended if the remote cannot be learned any other way.

#### RAW Repeat

It is possible to learn repeat codes in raw mode as well. As when learning normal repeat codes hold down the button on the remote.

#### Toggle Command

Very rarely remotes use multiple commands in turns when buttons are pressed repeatedly. Use the Toggle Command mode to learn this type of commands.

### 3.1.2 additional parameters

#### Device

If multiple IRTrans devices are connected to the PC a selection can be made with wich device codes are to be learned.

#### Carrier Frq

If the carrier frequency is known it can be entered here. When using the universal codelearning receiver the measured carrier frequency will be shown here. Inaccuracies of a few kHz ususally have no adverse effects.

Entering a frequency the receiver cannot analyze will not enable the IRTrans to receive this type of carrier frequency. Generally it is not required to input anything in this box.

### **receiver**

Here the receiver for learning IR codes can be selected. IRTrans devices with only one receiver offer only the active receiver to select aside external receivers. Receiver types are configured using the device settings dialogue.

### **calibration**

When learning very long IR Codes (especially for air conditioners) rounding errors might add up so that the IR code might no longer be recognized.

This option allows to record additional calibration data with the IR code. When the codes are sent these calibration data is used to correct the rounding errors.

These rounding errors only occur for IR codes longer than 50-80 bytes. Therefore that option generally is only needed for the IR Codes used by air conditioners.

The different values define how often the calibration data inserted into the IR Code (every 10, 30 or 75 bytes). Using more calibration data will limit the available memory for the IR code itself. In most cases it will be enough to use the 30 or 75 byte option.

### **Learn long button presses**

Some devices require long (several seconds) button presses for example to call a configuration menu. Using the Option learn long button presses those codes can be learned. In contrast to the usual learning procedure the button must be held down as long as is required by the device.

### **Learn B&O Code**

This enables to learn the special B&O IR codes. If no appropriate receiver is selected (Universal codelearning receiver, 455kHz receiver, 455kHz plasma shielded receiver) this option will have no effect.

### **No sort**

IR codes normally are sorted according impulse length. This deactivates the sorting function.

### **Wait Timeout**

The time (in s) the IRTrans software waits to receive an IR command until timing out. If no IR code is received within the specified time after pressing the learn button a timeout error will occur.

If the learn dialogue is closed while the timeout is running the software may freeze until the timeout runs down. After that everything will function normally.

### **Other options**

The further available options are identical to those described in the device settings. They will be discussed in the device settings section.

If modifications are made to parameters during learning these changes are only temporarily and will be discarded when closing the learn command dialogue.

### 3.2 Database files (.rem)

IR commands are stored in ASCII type database files. They usually are managed by the IRServer software but can be changed manually with any texteditor. Detailed information how to manually write database files can be found in chapter 7.5.

Deleting the database file will delete the appropriate remote from the command database.



It is important to stick to the correct syntax. Errors may lead to instability of the software.

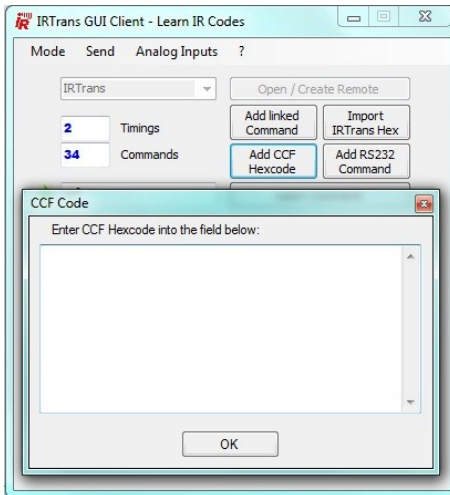


When altering or deleting database files it is necessary to reload the IR database. This can be achieved by restarting the IRServer software or by selecting „reload IR database“ in the context menu.

### 3.3 learn CCF Codes

The CCF Standard allows the huge IR Code database of the Philips Pronto® system with IRTrans as well. Currently all Mode 0, 1, 5 and 6 Codes are supported (First Block 0001, 0002, 0005, 0006). CCF Codes for many devices can be found on the internet (e.g. [www.remotecentral.com](http://www.remotecentral.com)). For further information about Philips Pronto® go to [www.pronto.philips.com](http://www.pronto.philips.com).

Using the file `ccf.rem` as a template CCF codes can easily be integrated in the IRTrans IR Code database. The tool „CCFExtractor“ is another comfortable option to do that. Even the learn IR command dialogue has a feature for entering CCF codes:



When clicking „Add CCF Code“ a small window pops up where CCF data can be pasted.

### 3.4 Linked commands

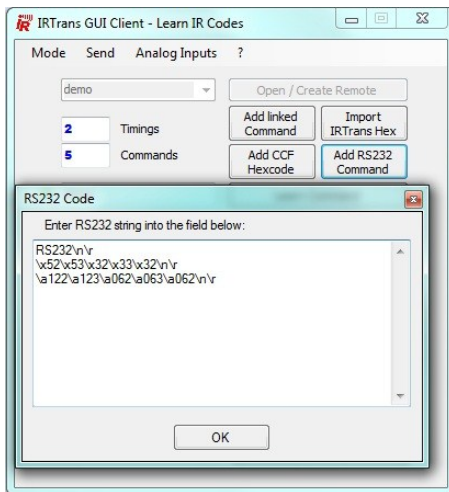
Already learned commands can be linked to other remotes. After selecting the remote and naming the command click on „add link“. Now select the remote and command the link will point to.

### 3.5 Import IRTrans Hex

IR command data in the IRTrans Hex format can be pasted directly using the import IRTrans Hex feature. To get IRTrans Hex data call „get IRTrans Hex“ from the IRServers context menu.

### 3.6 add RS232 command

IRTrans modules with RS232 interface can also be used to send data to the RS232 port instead of transmitting IR. To do that name the remote and command as usual and click on „Add RS232 Command“:



Dialogue for adding RS232 commands

RS232 data can be entered as ASCII string, as HEX or as decimal code.

The three lines of the example shown here result in the same. Each line will transmit the Bytes „RS232“ to the RS232 interface followed by /newline and / carriage return. The first line is plain ASCII text, the second Hex data and the third decimal data.

Bytes coded in hexadecimal notation are preceded by „\x“ followed by two character representing the byte (each 0..F).

Bytes in decimal notation consist of „\a“ and three numbers (0..9).

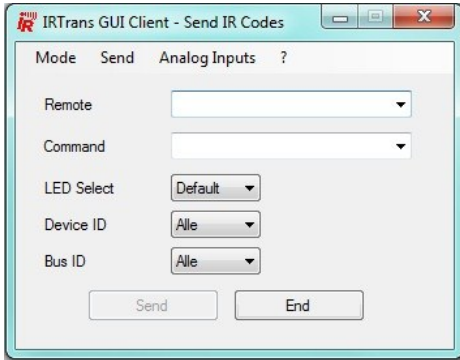
\n and \r are ASCII control characters and stand for newline and carriage return respectively.

All characters will be transmitted. Blanks between bytes in hexadecimal or decimal notation will be sent as well.

## 4. sending IR codes

A simple means of sending IR commands is the „send IR code“ dialogue of the IRServer.

The dialogue is opened by selecting „send IR command“ in the IRServer context menu or by selecting „send“ in the GUIClient. Dropdown menus allow the selection of a remote and command.

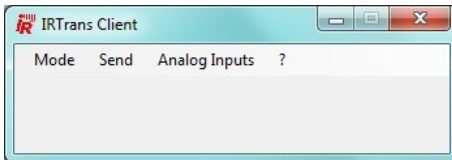


Select remote and command by using the dropdown menus.

If multiple IRTrans devices are connected select the device that will send the code with bus id and device id.

### 4.1 IRTrans GUI Client

The IRTrans GUIClient can be used if the IRServer is running on a different PC. The GUIClient connects to the Server on the specified IP and makes most of the servers functions available. This includes sending IR, learning commands and configuring IRTrans devices.



IRTrans GUI Client

The mode menu offers the following selections:

- Device Status
- Learn IR commands
- Device database
- IR Translator
- IP adress

Additionally the GUIClient has the same „send“ dialogue as descibed above as well as an overview of analog inputs if applicable.

## 4.2 IRTrans ASCII (Batch) Client

The IRTrans ASCII Client works on Windows and Linux. The Client uses the command line interface and allows learning and sending commands as well as setting status flags of the IRTrans.

When starting the ASCII client the IRServers IP adress must be included in the call, if the server runs on the same machine this will be: „./irclient localhost“ Replace „localhost“ with the servers IP if running on a different computer.

The IRClient offers a text based menu but can be used for batch control.

### 4.2.1 sending IR commands

```
irclient <ip> <remote> <command> [sendmask] [bus] [led]
```

Parameters:

<ip>	IP address of the IRServer
<remote>	name of remote
<command>	name of command
[sendmask]	sendmask for IRTrans bus (ref. to 5.1.8)
[bus]	Bus ID
[led]	LED selection (i=internal, e=external, 1..8=LED #)

Parameters in square brackets are optional but must be used in the shown order.

### 4.2.2 IR database

```
irclient <ip> -flashirdb <bus> <actionstring> <remotelist>
irclient <ip> -loadirdb <bus> <filename>
irclient <ip> -reload
irclient <ip> -remotelist
irclient <ip> -commandlist <remote>
```

Parameter:

-flashirdb	load a list of remotes to the IR database
<bus>	Bus ID
<actionstring>	Action string for received commands (ref. to 7.2)
<remotelist>	list of remotes
-loadirdb	load GUIClient .irdb file
<bus>	Bus ID
<filename>	filename of the database file (without .irdb)
-reload	reload IR database of the server
-remotelist	print a list of remotes
-commandlist	print a list of commands for <remote>

## 5. Settings

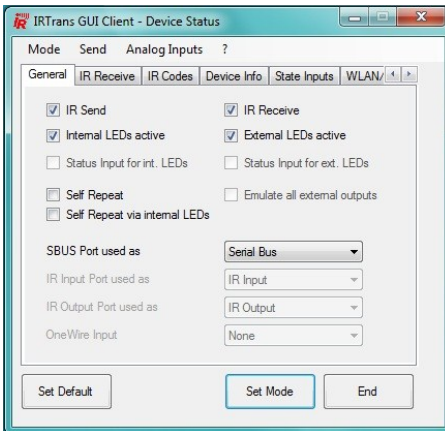
### 5.1 IRTrans Device Status dialogue

The IRTrans modules offer a wide range of settings and parameters. They can be configured using the Device Status dialogue. The Device Status dialogue can be opened with the IRServer taskbar utility, the GUIClients mode selection or with IRRemote.

IRTrans devices can also be configured using the IRConfig Java application. This makes using the IRTrans possible on a variety of platforms.

No matter how the device status dialogue is opened there are always the same options and parameters available. Because there are numerous parameters they have been divided to a number of tabs. If an option should not be available with the IRTrans connected it will show but be disabled (grey).

#### 5.1.1 General



Tab „General“

Some IRTrans devices offer a selection of functions to one physical input or output. Which option will be used can be selected here.

**IR send / receive:** Can be used to disable the sending or receiving function of the IRTrans. (default: both on)

**Internal LEDs active:** This allows disabling the internal LEDs. This does not override a direct selection of LEDs by a client using the IRTrans API.

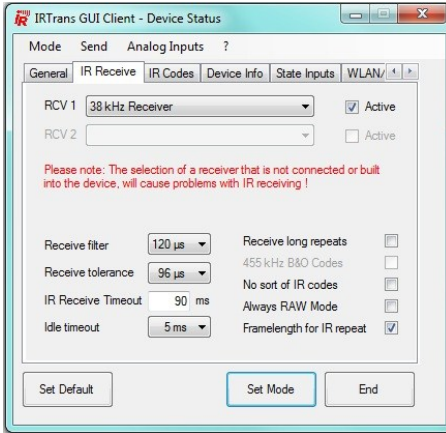
**External LEDs active:** same as with internal LEDs.

**Self Repeat:** Using this option the IRTrans can be used as a repeater. Received codes will be transmitted by the same IRTrans. An example would be relaying IR transmissions into a closet.

**Self Repeat via internal LEDs:** Activates self repeat with internal LEDs. This can lead to echoes or endless loops of commands if the IRTrans can „see“ its own transmission or the remote device receives both the original and the IRTrans' code.



## 5.1.2 IR receive



### Optionen für den IR Empfang

Most of these parameters should be left untouched. Only change them if experiencing problems

**RCV. 1 / RCV. 2:** Here the receiver type can be selected. Devices with only one receiver only offer one selection. Receivers marked with [EXT] are connected to the external receiver input. Check the appropriate hardware guide if there is a jumper to be set.

The checkboxes can be used to activate or deactivate the receivers. If an IRTrans has multiple receivers only one should be active at a time.



**Selecting a wrong type of receiver (e.g. wrong modulation frequency) will cause the IR reception to fail.**

**Receive Filter:** Use this to filter IR noise. Pulses shorter than the specified time will be discarded. The larger this value the more resistant the IRTrans will be to noise. However this value must be smaller than the shortest IR pulses used in the commands.

**Receive Tolerance:** This value defines the tolerance when receiving IR signals. Larger values make the IRTrans less susceptible to inaccuracies of the IR codes but might cause other devices not to receive the IRTrans' codes correctly.



**Selecting too large values for these two options will cause the IR-Trans not to distinguish between small differences in the codes. This may lead to errors. The standard values usually yield good results.**

**IR Receive Timeout:** This value controls maximum pause lengths within an IR code. A pause longer than the specified value will terminate the code. Setting this value too small will cause the IRTrans to stop receiving prematurely. On the other hand smaller values can improve performance with repeated codes. When altering this value it is recommended to make small steps and test the results.



When learning codes for the database the timeout value should better be too large rather than too small. Otherwise it can happen that codes are not learned completely.

**Idle Timeout:** This timeout is used to resynchronize between two different IR codes. It is the minimum time between discrete IR commands. The standard value (5ms) is usually suitable for most scenarios, smaller values might improve the repeat speed when holding a button depressed.

**Receive long repeats:** Normally 2 IR repeats are evaluated when receiving an IR code. Rarely IR codes consist of 2 repeats and a 3rd different code. This option can be used to relay such codes. Normal learning is not affected because during learning the IRTrans uses more repeat cycles. Checking whether this option is needed is pretty straightforward: Relaying doesn't work and the codes in the .rem file are longer than the codes displayed by „Detected IR commands“.

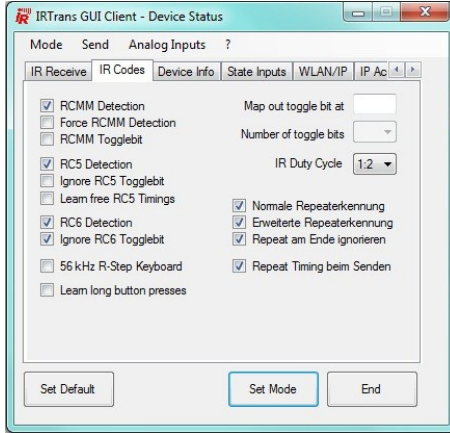
**455 kHz B&O Codes:** Using this checkbox learning of 455kHz B&O codes will be enabled. This will only work when a 455kHz receiver is selected (either Universal colearning receiver, 455kHz receiver or 455kHz plasma shielded receiver). All other learn / receive options are set to optimized values for B&O codes automatically

**No sort of IR Codes:** Received IR codes will not be sorted according pulse length. This might ease recognition of codes especially with codes that use many different timings.

**Always RAW Mode:** All IR codes will be received in RAW mode. Also all IR codes will be relayed in RAW mode. This option is rarely needed.

**Framelength for IR Repeat:** When measuring timings for IR repeats the whole code frame length will be used (IR code + pause). Without this option the pause length will be measured. This was the operating mode of earlier firmware versions. Normally the new mode will work more reliable, this option is available only to be compatible to earlier versions and should normally be left activated.

### 5.1.3 IR Codes



Parameter für spezielle IR Codes

**RCMM Detection:** The IRTrans will try to decode IR code to the RCMM standard. If codes should be misidentified as RCMM codes this option may be disabled. In most cases this will not be needed.

**Strong RCMM Detection:** This will improve RCMM detection by widening the detection windows. This will improve the probability that RCMM codes are correctly detected but at the same time increase the risk of non RCMM codes being falsely identified as RCMM. This will work most efficiently with a special (fast) IR receiver.

**RCMM Togglebithandling:** Some devices use RCMM with an additional toggle bit. Examples are some Kathrein STBs. Using this option the IRTrans will automatically generate the toggle bits. RCMM devices not using toggle bits will not work correctly when this option is enabled.

**Detect RC5 / RC 6 Codes:** Enables automatic RC5 / RC 6 detection. Some devices use codes similar to RC5 / RC6 code which are then falsely identified as RC5 / RC6. In this case automatic detection may be disabled.

**Ignore RC5 / RC6 Togglebit ignorieren:** RC5 and RC6 codes normally use togglebits. There are a few remotes that use RC5 / RC6 without toggle bits. In this case automatic toggle bit handling can be disabled. Standard RC5 / RC6 remote will not work correctly when this option is disabled.

**56kHz R-Step Keyboard:** Allows using an IR keyboard with R-Step protocol. A 56kHz receiver is needed.

**Learn long button presses:** Some devices use long button presses (several seconds) to call up configuration menus for exmaple. Using this option these codes can be learned. In contrast to the normal learning procedure the button needs to be deppresses as long as needed when using this option.

**Map out Togglebit at / Number of Togglebits:** This allows manually mapping out toggle bits in an IR code. To do that the position of the toggle bit(s) has to be set (0..62). Furthermore the Number of togglebits must be selected. The codes have to be learned using this setting and the option „map out toggle bit“ of the learn dialogue.

**IR Duty Cycle:** The IRTrans devices have high power IR transmitters. Sometimes these transmitters are too powerful so the receiver will be overdriven and receive errors occur. The parameter duty cycle allows to reduce transmitting power. (Standard: 1:2 = high power)

**Einstellungen für Wiederholcodes (Repeat Erkennung etc.):**

Normally this should not be changed. The IRTrans will automatically detect repetitions of IR codes. Very rarely there are problems with code repetitions. In this case repeat detection can be adapted as well as deactivated.

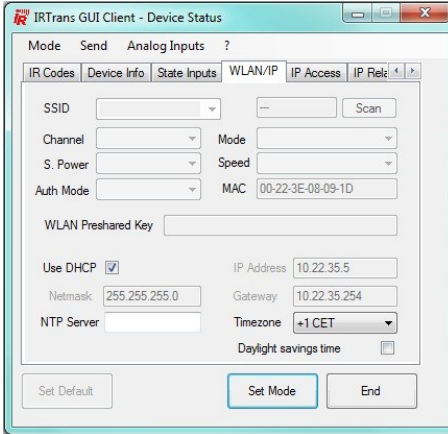
**5.1.4 Device Info / Firmwareupdate**

From this tab the firmware update dialogue can be opened. A firmware update is usually not recommended unless there are problems with the current version.



The device info tab shows hardware revision, firmware versions and capabilities of the device.

### 5.1.5 WLAN / IP



The „WLAN / IP“ tab is used to configure wireless as well as wired Ethernet interfaces .

If applicable WLAN settings will be made here. „Scan“ searches for available networks. The network may be selected from the SSID menu. If the SSID is known it can be entered directly to the SSID box.

Enter the WLAN Password in the WLAN Preshared Key box. It is recommended to use WPA2 encryption with at least 15 characters for the passphrase. IRTrans devices can operate with key lengths up to 31 characters.

Further options allow fine tuning network settings and can be left at default values.

The lower part of the tab is used to configure IP settings. This is available for all Ethernet based IRTrans devices.

**Use DHCP:** The IRTrans will request an IP address from the DHCP server. Unchecking this box will enable manual setting of IP address.

**IP Address:** IP address of the IRTrans device, when using DHCP the assigned address will be displayed here.

**Netmask:** Subnet mask.

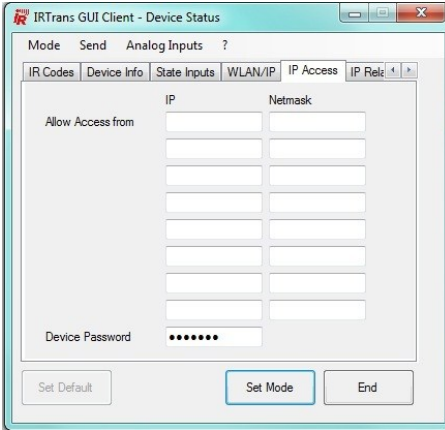
**Gateway:** Standard gateway.

**NTP Server:** If an NTP timeserver is available it can be entered here. The IRTrans will automatically synchronize its clock to the server allowing timers to run commands at specific settings.

**Timezone:** Allows setting of timezone.

**Daylight savings time:** Enables daylight savings time.

### 5.1.6 IP Access



Access restrictions can be defined in the IP Access tab

Using the IP access tab access to the IRTrans can be restricted. Access to the web based configuration frontend is never blocked from the subnet the IRTrans is connected to. This will protect against locking out oneself.

For example entering the IP 192.168.0.0 with netmask 255.255.255.0 will allow all clients from the subnet 192.168.0.X to access the IRTrans.

Entering 192.168.0.3 with 255.255.255.255 will only allow access to the client using the IP address 192.168.0.3.

If nothing is entered here there are no access restrictions to the IRTrans.



**Due to limited computing power it is not possible to fully protect an microcontroller against attacks. Therefore setting up a firewall to protect the IRTrans in hostile environments is strongly recommended.**

Using this tab the device password for entering the web based configuration interface and the IPAssign tool can be set.

By default the account data is:

**Login: admin**

**Password: irtrans**



It is recommended to change the default password. If the password is lost the IRTrans will have to be reset to factory defaults to regain access.

## 5.1.7 IP Relay



IP Relay configures how received IR commands are forwarded to the network.

IP Relay allows using Ethernet to relay IR code to other IRTrans devices. This works without additional hardware, Servers and IRDB.

By default alle received IR commands are distributed as broadcast to the network and transmitted by all IRTrans devices.

**Accept IR Relay from:** This can be used to accept IR relay only from specific IP addresses.

**Send IR Relay to:** Here specific targets for IP relay can be configured. Normally it is sufficient to use broadcasts but when relaying to a different network specific targets must be entered. Broadcasts will not be routed.

**Broadcast IR Relay:** Sends out a bradcast for every IR code received.

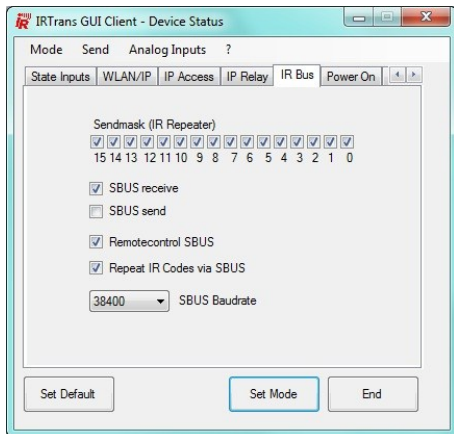


The receiving function of the IRServer utilizes these broadcasts. If the server is located in a different subnet it must be entered as targed using „Send IR relay to“.

**Send UDP ASCII Results to Sourceport:** When receiving commands via the UDP ASCII interface the IRTrans can send the acknowledgement either to the sourceport or the default IRTrans port (21000). Selection is made by checking or unchecking this box.

**UDP RCV IP/Port:** If the IRTrans is equipped with IRDB it can send the decoded command to the specified adress upon reception.

### 5.1.8 IR Bus



IRTrans Bus options

IRTrans modules equipped with the IRTrans 2-wire bus (RS232, USB, LANController devices) offer a serial bus to connect up to 15 additional bus module to one busmaster. The IRServer can access up to 16 busses so a total of 256 devices are imaginable.

**Sendmaske:** By default received IR commands are forwarded to all modules sharing the same bus. By using the sendmask the device can be configured to accept such relays only from specific modules. When used by a graphical user interface the sendmask will be visualised as 16 checkboxes but with textbased interfaces this is a 16-bit number with the corresponding bits set.

**SBUS Receive:** If this option is set the IRTrans will react to commands coming through the 2-wire bus. If not the IRTrans will ignore all commands from the 2-wire bus (thus acting as receiver only if reception is enabled).

**SBUS send:** corresponding setting for sending received IR commands to the 2-wire bus.

**Remote control SBUS:** IR commands received by bus modules and sent via the 2-wire bus will be forwarded to the PC.

**Repeat IR Codes via SBUS:** Received IR commands will be forwarded the IRTrans bus. When this option is not set no IR relaying will be done but sending commands is still possible.

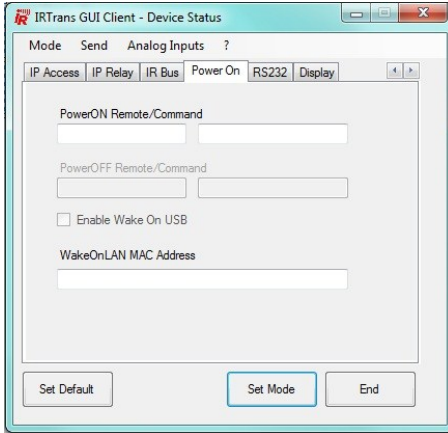
**SBUS Baudrate:** The IRTrans bus normally uses a baud rate of 38400 Baud. When using very long cables or experiencing problems with interference a lower value can be set. The „Classic“ mode allows operation with old IRTrans Bus modules.



All IRTrans modules must use the same Baud rate. Otherwise the bus will not work.



### 5.1.9 Power On



PowerOn configuration tab

**PowerON Remote / Command:** The remote control command to switch the PC on.

Ethernet devices: The IRTran will send an Wake on LAN package („magic packet“) to the given MAC address. If that will wake up the PC from standby or even switch on depends on the configuration of the PC.

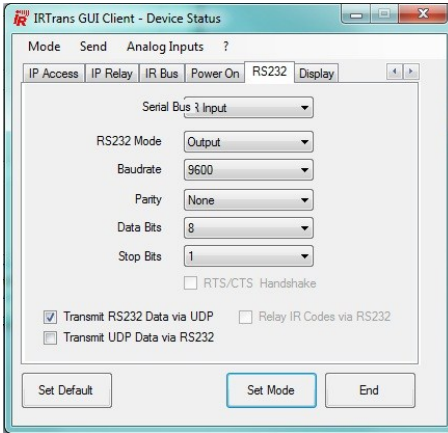
USB devices: The PowerOn command is only relevant if the PC the IRtrans is connected to is switched off. The IRTrans will then generate an USB resume event that will wake up the PC. Depending on the configuration of the PC this will not work when the PC is in S3 Suspend mode because waking up from S3 is not defined by USB standards.

Devices with PowerOn option: Here the built in relay will be activated and mimic the operation of the PCs power switch. This will work even if the PC is completely shut down.

**PowerOFF Remote / Command:** This option is only available on USB devices with PowerOn option. If the PC is running and the PowerOFF IR command is received the relay will shut the PC down by pressing the power button..

**WakeOnLAN MAC Address:** Enter the MAC address of the PC to wake up by Wake on LAN.

### 5.1.10 RS232



The RS232 tab configures the RS232 settings.

**Port:** Some IRTrans modules can switch the RS232 interface between several physical connectors. They can be selected by using the „Port“ selection.

**RS232 Mode:** Sets the RS232 mode. IRTrans modules that only offer a uni-directional RS232 interface can be set to send or receive.

**Baudrate:** RS232 Baudrate, 4800, 9600, 19200, 38400, 57600 und 115200 Baud are supported.

**Parity / Data Bits / Stop Bits:** detailed settings for RS232 communication.

**RTS/CTS Handshake:** activates RTS/CTS handshake

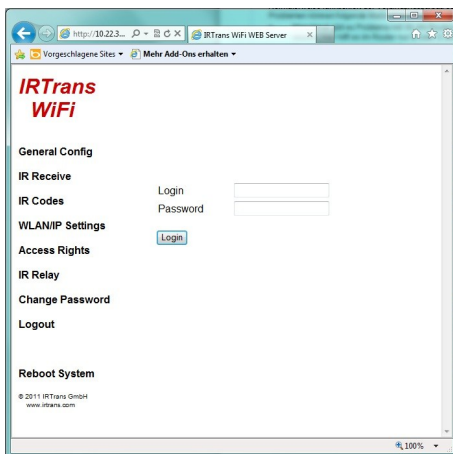
**Transmit RS232 Data via UDP:** data received by RS232 is forwarded via UDP.

**Transmit UDP Data via RS232:** data received via UDP is forwarded to the RS232 interface.

**Relay IR Codes via RS232:** received IR commands are forwarded to RS232

## 5.2 Webinterface

Some of the settings are available through the web interface as well. The web interface can be opened by using the IRTrans' IP address as an URL in any common internet browser. First there is a login page.:



IRTrans modules with ethernet interface (LAN, PoE, WiFi...) offer a web based configuration tool.

Default Login and Password:

Login: admin

Password: irtrans

The available options are logically identical to those available in the device status tabs (ref. to 5.1).

Irrespective of the IP Access restrictions it is always possible to gain access to the webinterface from its own subnet. This prevents locking oneself out.

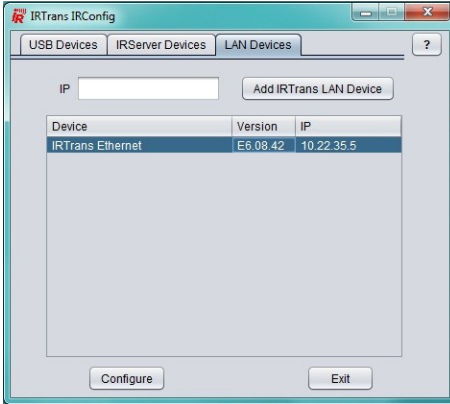
## 5.3 IRConfig for Windows

The IRConfig application included in the windows software package is identical to the device status dialogue. It can be used to configure alle IRTrans devices with USB connection.

IRConfig will automatically detect IRTrans USB modules. If there are multiple modules present it will show a selection dialogue.

## 5.4 IRConfig Java Application

There is a Java application available for configuring IRTrans modules and servers. This enables cross-platform use of IRTrans modules. When starting the IRConfig Java tool there is a selection dialogue:



IRConfig Java Application

The appropriate IRTrans device or server can be chosen from the respective tabs and by clicking „configure“ the configuration dialogue will show. The configuration dialogues are identical to the device status / IRServer parameter dialogue.



The IRConfig Java application requires Java Runtime Environment (JRE) version 1.6 or later.



IRTrans WiFi modules connected by USB will show in the USB devices tab.

## 6. Clients

There are several different clients available to use the IRTrans devices. This includes PC software, smartphone / tablet apps and home automation products. Getting these third party software to work with IRTrans is covered in the respective user manual of the client. Communication with the IRServer usually requires no intervention.

### 6.1 APIs

For writing own software there are several different APIs (application programming interfaces). Documentation can be found in the IRTrans API handbook.

## 7. Advanced Options

### 7.1 Devices with integrated IR database (IRDB option)

The integrated IR database allows operation without a PC running the server software. Parts of the servers functionality have been integrated in the IRTrans. It is however not possible to implement the entire IRServer on a microcontroller.

Devices with integrated IR database can offer the following IRServer functions on their own:

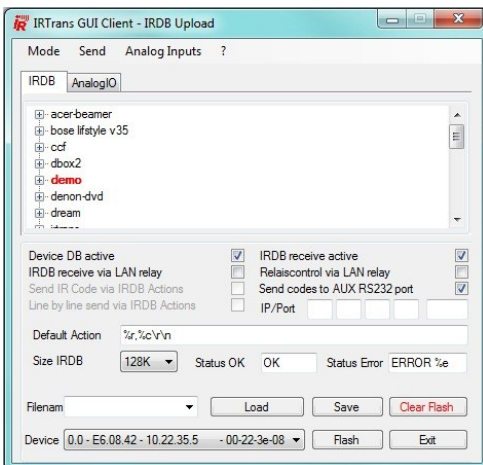
- Send IR codes from the database
- Send CCF codes
- Receive IR codes and decode to plain text if present in the database
- Listing of remotes and commands enclosed in the database

Administration of the IR database has to be done by a PC with the IRServer software. This includes learning commands, programming macros etc. The IR database memory is sufficient for 1000-1500 IR commands.

### 7.2 Administration of the IRDB

IR commands can only be learned with the PC software. The IR commands are stored in database files on the PC which can now be selected and written to the IRTrans' database. For this use the „Device Database“ dialogue.

There are no restrictions on how many remotes may be selected. The device database can hold approximately 1000-1500 commands (128k).



Select the needed remotes by right click -> select

Selected remotes will show bold and red.



When flashing the database to the device the entire memory is overwritten. Therefore **all needed** remotes must be selected every time the IRDB is flashed.

Transfer of the database to the IRTrans is done by pressing the button „flash“.

Concluding the procedure the IRDB file may be saved on the PC. Write a filename to the textbox and click „save“. Saved IRDB files may be loaded again by selecting them from the dropdown menu and clicking „Load“.

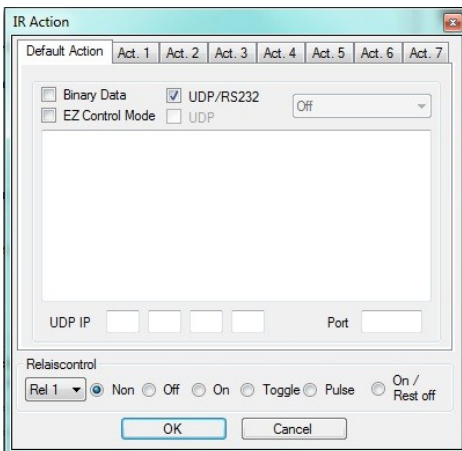


It is not possible to read the IRDB data from the IRTrans.

The built in IR database may be deactivated by unchecking „IR database active“. Then the IRTrans will behave like an equivalent model without IRDB.

„IRDB receive active“ means that the IRTrans will search for the IR command in its database and send the decoded command to the network.

The default action upon receiving an IR command can be configured using the textbox „default action“. Additionally it is possible to set different actions for specific remotes or even commands. The default setting „%r,%c/r/n“ causes the IRTrans to broadcast the received command to the network. „%r“ stands for the remote, „%c“ stands for the command. „/r/n“ are ASCII control characters for carriage return and new line. When an IP address is specified at „IP / Port“ the IRTrans will not use broadcasts, instead it will send the decoded command to the given address.



A sequence of up to 8 actions can be defined for every command if needed.

It is also possible to enter binary data or transmit something to the RS232 ports. Selection of RS232 Ports is done by the dropdown menu.

Relais control settings configure how internal relays (if present) react.

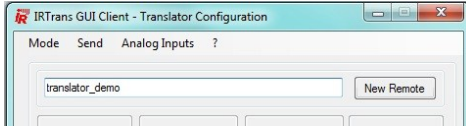
By right clicking a remote or command different settings can be specified. It is even possible to define sequences of up to 8 actions.

IRTrans devices without the IRDB option send raw IR data to the network. „IRDB receive via LAN relay“ allows to use the IRTrans integrated database to decode received commands that are broadcast by other devices on the network.

### 7.3 IR Translation (only IRTranslator)

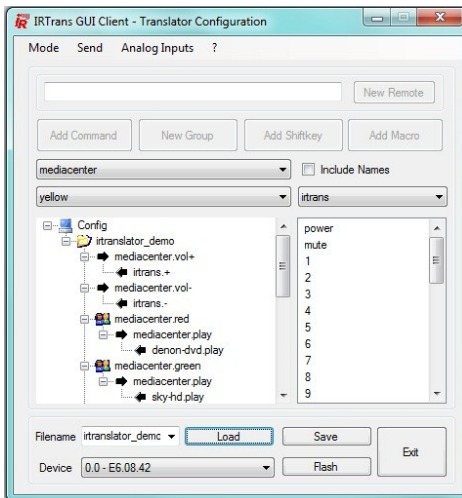
The IRTranslator database is administered in the „IR Translation“ dialogue. In principle this is identical to the regular IRDB.

First enter a name for the new remote and click on „new remote“. This will be the IRTranslator remote and shows in the left column of the window.



The received commands can now be selected above the left column. „Add command“ will generate a new translation. Simply select the remote where the command to be sent is stored and drag the command from the right column to the appropriate received command.

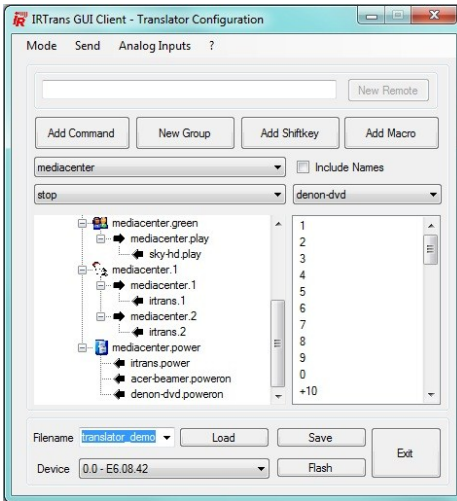
In the example shown below the IRTranslator will transmit „irtrans - vol+“ when „mediacenter - vol+“ was received. Translations that have been constructed like this are always executed.



Beispielkonfiguration IR Translation mit global gültigen Übersetzungen und Gruppen

If different devices need to be operated by the same buttons but different commands they will need to be divided into groups.

In the example there are two groups of commands, one activated by „mediacenter - red“ the other by „mediacenter - green“. Groups can be generated by selecting a received command and clicking „add group“. The IRTranslator will now change the active group according to the received command. When the „mediacenter - red“ group is active it will transmit „denon dvd - play“ when „mediacenter - play“ is received, when the green group is active „sky-hd - play“ accordingly.



Example configuration:

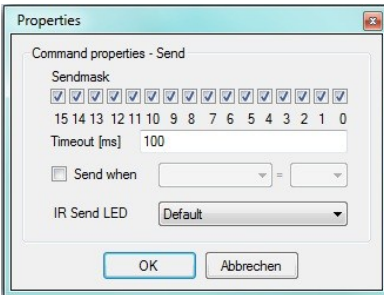
Shiftkey „mediacenter - 1“

Macro „mediacenter - power“

Some remotes use shift key to have different commands on one button. A Shift-key can be generated with „add shiftkey“ either globally or in a group. A shiftkey generally behaves similar to a group but is only valid for the next command. After this command is sent the IRTranslator will change back to the last active group.

Macros send multiple commands automatically. In the example the macro „mediacenter - power“ will send commands to three different devices. The default pause between commands is 100ms but can be changed.

Additional options can be set by right clicking on the command to be sent.



Properties of the command to be sent

Sendemaske selects devices on a bus

Timeout after this command when using Macros

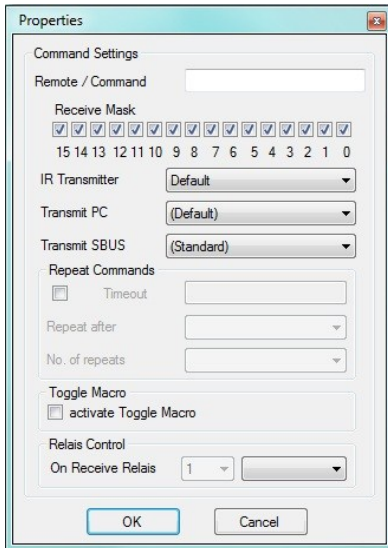
Selection of LEDs (internal, external...)

If multiple IRTrans devices are connected via the IRTrans bus the sendmask can be used to select which modules will actually transmit.

Timeout is the pause after the command is sent before the next macro command will be sent.

This settings can be made for each command individually.





Options available for receiving commands

Receive mask to select which devices on the bus will be able to receive

Action upon receiving a command, forwarding to the PC or bus

„Repeat Accelerator“ improves performance when holding buttons

There are some options available that can be set for received commands as well.

If using multiple IRTrans Devices on the IRTrans bus the IRTranslator can be set to react to specific devices only by setting the receive mask.

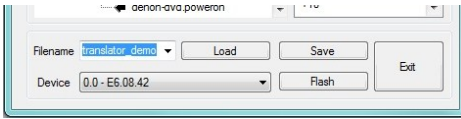
The „IR send LED“ option is available for groups and sets the LED to send IR for the entire group rather than configuring every single command individually.

The options „forward to PC“ and „forward to SBUS“ set if at all and using which format the IRTranslator will forward data to the PC or bus.

The settings for „repeat commands“ can improve performance with buttons that are held down (e.g. volume). Generally the IRTranslator will never be able to transmit commands as fast as the regular remote because commands need to be received first and the transmit again.

The repeat accelerator can be used to send commands multiple times for each received IR command. „Repeat after“ controls when the IRTranslator starts to transmit multiple commands and „number of repetitions“ controls how many times a command is repeated after being received once. Receive Timeout is the timeout to IRTrans waits after receiving an IR command before reception of a new command is possible. The default setting can be used as reference and changes should be made step by step.

As with the regular IR database the Translators IR database must be flashed to the device. The lower section of the IR Translation dialogue uses the same buttons and operating principle as the device database dialogue:



Save the configuration to a file and flash the database to the IRTranslator



It is not possible to read out the IR database from the IRTranslator as well. For later access and modifications save the database file to the PC.

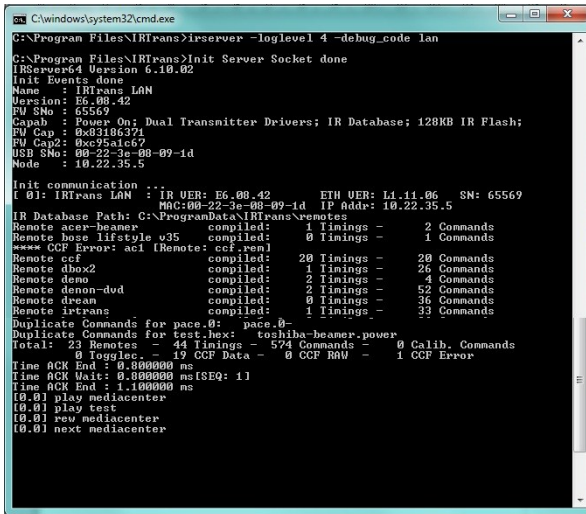
### 7.4 advanced IRServer configuration

The basic options described in Chapter 2.3 normally are sufficient for operation of the IRServer. There are however a few advanced parameters that can be modified by specifying parameters to the „commandline options“ textbox or when running the server in a command line environment. The list with all the options can be found on the next page.

For testing it is often required to get status reports and debug information. When running from the command line starting the IRServer may look like this:

```
irserver -loglevel 4 -debug_code lan
```

The IRServer will now write debug information to the command line. Received IR commands will also be displayed.



### 7.4.1 IRServer command line options

The IRTrans Server supports the following optional parameters:

- daemon                    Run the server as daemon (nur Linux)
- debug\_code              Display received IR codes.
- <device>                  Select the IRTrans device by:  
device ID (COM Port, USB Device ID, IP adress)  
automatic search when using „usb“ or „lan“  
multiple devices may be separated by commas, the bus IDs  
will then be assigned according to this order.
- hexdump                  The server will display the entire communication between  
hardware and software. This can be used to send com-  
mands from other system through the IRTrans hardware.
- hexfile <file>          as above. Output will be written to <file>
- baudrate <baud>        RS232 Baud rate.
- http\_port <port>        Activate webserver. Listening on <port>
- logfile <file>          Save log to <file>.
- loglevel <level>        set loglevel:  
0            no messages  
1            only fatal errors  
2            only errors  
3            show informational messages  
4            Debug Information
- netmask <mask>         similar to the IP Access settings: Only clients within the spe-  
cified netmask may access the IRTrans. The format is ip/bits.  
192.168.0.0/24 defines a standard Class C network. IP/32  
specifies a single client. This parameter may be used more  
than once.
- no\_lirc                    disable LIRC
- no\_reconnect            The IRServer will not try to reconnect if communication is  
lost to an IRTrans device.
- set\_id <id>              set bus ID of new modules
- stat\_timeout <to>        timeout (in s) after which the cache for the device status is  
re-read.
- tcp                        IRServer starts in TCP mode
- version                  shows the server version
- xap                        Enables the built in xAP interface.

## 7.5 database files (.rem) - additional information

IR commands are stored in ASCII type database files. They usually are managed by the IRServer software but can be changed manually with any texteditor. Detailed information how to manually write database files can be found in chapter 7.5.

Deleting the database file will delete the appropriate remote from the command database.



It is important to stick to the correct syntax. Errors may lead to instability of the software.



When altering or deleting database files it is necessary to reload the IR database. This can be achieved by restarting the IRServer software or by selecting „reload IR database“ in the context menu.

The database file is split into three sections: [REMOTE], [TIMING] and [COMMANDS]

The section [REMOTE] contains the name of the remote irrespective of the type of database file. The name specified by [NAME] must be identical to the filename.

[TIMING] and [COMMANDS] will vary depending on the type of information stored:

### 7.5.1 IRTrans standard format

This format is the standard for commands learned by IRTrans devices. Timing information is stored independently from the command data. There is no restriction to the number of timings stored in a database file. The individual fields of a timing have the following meaning:

[TIMING]

[0][N]3[1]400 1672[2]400 2848[3]400 6168[RC]1[RP]0[FREQ]57[FREQ-MEAS]

[0]	Number of the timing
[N]3	number of time values
[1]400 1672	1st pulse / pause pair, times in $\mu\text{s}$ , resolution 8 $\mu\text{s}$
[RC]1	number of repetitions
[RP]0	pause between repeats in ms
[FL]100	Framelength of the IR signal (replaces [RP])
[FREQ]57	carrier in kHz
[FREQ-MEAS]	frequency has been measured
[SB]	Code uses a start bit
[RS]	Start bit is repeated
[RC5]/[RC6]	Code uses RC5 / RC6 standard
[NOTOG]	RC5 / RC6 toggle bit will not be used

Some of the fields can be left missing.

The Timings are used to generate commands:

[COMMANDS]

```
[play][T]0[D]21111001111101111211110011111011110
[pause][T]0[D]201111111111111112011111111111110
[stop][T]0[D]20111101111111111201111011111111110
```

[play]	Name of command
[T]0	This command uses timing 0
[D]2111100...	actual command data. Refers to pulse / pause pair No.

The pulse / pause pair number used by the command does not coincide with the pulse pause pair number of the timings. If the code uses a start bit this will be coded as „S“ and refers to the first pulse pause pair at all times. Then counting will start at „0“.

### 7.5.2 IRTrans Raw Format

If a command can not be learned using the standard format the raw format is used:

[TIMING]

[COMMANDS]

```
[1][RAW]41[FREQ]56[D]232 408 232 304 336 200 128 520 216 ...
[2][RAW]45[FREQ]56[D]232 408 232 304 336 200 128 520 232 ...
[3][RAW]41[FREQ]56[D]216 424 216 320 320 216 112 536 216 ...
```

The [TIMING] section remains empty because all timing data is included in the commands.

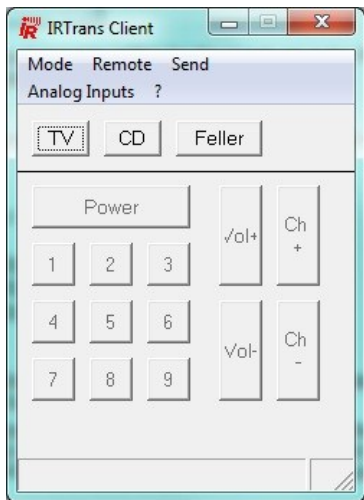
[1]	Name of command
[RAW]41	Number of pulse / pause pairs in this command
[FREQ]56	carrier in kHz
[D]232 408...	pulse / pause times in $\mu$ s

Using the IRTrans RAW format codes will be stored as pulse / pause times in  $\mu$ s. Pulses longer than 2040 $\mu$ s will be stored as two bytes with leading zeroes. Editing RAW codes manually generally does not make sense, it is too complicated.

## 7.6 IRRemote

IRRemote is a simple programmable remote control with graphic user interface.

When starting IRRemote there will be a sample remote:



Hauptfenster der IRRemote Anwendung

Noch nicht gelernte Befehle erscheinen grau und sind deaktiviert.

This remote can be customised by editing the file remote.irm in the IRTrans folder. The default remote.irm will act as a template for own settings.

### Editing remote.irm:

The remote.irm file can be opened and edited by any standard text editor.

```
[MAIN]
[FRMPIX]400,300
[SEP]0,45 [END]500,45

[MOD]10,10 [SIZE]40,25[PANEL]TV
[MOD]60,10 [SIZE]40,25[PANEL]CD
[MOD]110,10 [SIZE]60,25[PANEL]Feller
[END]
```

The [MAIN] section defines the area of the remote that will always be visible. Use this section to create panels for different devices.

[MOD] lines define different panels. After the [MOD] tag enter the position of the Button for this selection. [SIZE] defines the size of the button. Name the button with [PANEL], this name will also be shown in the „Remotes“ menu.

```

[CD]
[FRMPIX]460,280
[LBL]10,250    [SIZE]300,30[TEXT]CD
[SLED]1
[SDEVICE]0

[POS]10,10    [SIZE]100,30[TEXT]Power On [REMOTE]Yamaha
                                     [COMMAND]PowerOn
[POS]120,10   [SIZE]100,30[TEXT]Power Off [REMOTE]Yamaha
                                     [COMMAND]PowerOff

...
[END]

[TV]
[FRMPIX]250,220
[LBL]10,200   [SIZE]300,30[TEXT]Topfield[FONT]14
[SLED]4

[POS]10,50    [SIZE]30,30[TEXT]1      [REMOTE]Topfield  [COMMAND]1
[POS]50,50    [SIZE]30,30[TEXT]2      [REMOTE]Topfield  [COMMAND]2

...
[END]

```

[CD] opens the section corresponding to [PANEL]CD.

[FRMPIX] allows to set window size in pixels. [LBL] adds Text.

[SDEVICE] is used to select the Bus ID for sending (vgl. Kap. X.x) and [SLED] selects the LEDs. [SLED] can have the following values:

- 1 = internal LEDs
- 2 = external LEDs
- 3 = All LEDs
- 4-12 = External LED Nr. (output 1-8, „4“ corresponds to „output 1“)

If [SDEVICE] and / or [SLED] are not specified the default values of the device settings will be used.

With [POS]X,Y a button will be generated at the X (horizontal) and Y (vertical) coordinates. 0,0 is the top left corner of the window. [REMOTE] and [COMMAND] assign the appropriate command to the button. Commands not available in the IR database will be deactivated and shown grey.

The panel is closed with the tag [END]. After that the next panel can be opened.

